



## **LIFE SAFETY FROM PURITY FIRE**

**Fire Fighting Equipment Manufacturer  
A Leader in Fire Protection System  
Diverse Products Best Quality Full Service**

### **PURITY PUMP CO.,LTD.**

Taizhou Purity IMP & EXP Co., LTD.  
ADD: 456 Daxibei Rd., Daxi Town, Wenling City, Zhejiang,China  
Tel : 0576-86090666 Fax: 0576-89687266  
Mobile:18667600006  
Email: info@purityfire.com  
Website: www.purityfire.com

[www.purityfire.com](http://www.purityfire.com)

# Contents



<b>Company Profile</b> .....	<b>01</b>
<b>Our Team/Exhibition/Machinery/Production Line</b> .....	<b>03</b>
<b>Fire Fighting Pump System</b>	
<b>PEDJ</b> Fire Pump Set with Electric+Diesel+Jockey Pump .....	<b>05</b>
<b>PEJ</b> Fire Pump Set with Electric+Jockey Pump .....	<b>07</b>
<b>PDJ</b> Fire Pump Set with Diesel+Jockey Pump .....	<b>08</b>
<b>Fire Fighting Pump</b>	
<b>PST/PS</b> End Suction Fire Pump .....	<b>09</b>
<b>PSM</b> Centrifugal Pump Coupled with Electric Motor .....	<b>17</b>
<b>YE-3</b> Electric Motor for Pumps .....	<b>17</b>
<b>PSD</b> Diesel Pump .....	<b>20</b>
<b>PD</b> Diesel Engine for Pumps .....	<b>20</b>
<b>PV</b> Vertical Multistage Jockey Pump .....	<b>22</b>
<b>PVT</b> Jockey Pump with Pressure Tank .....	<b>22</b>
<b>PSC</b> Double Suction Split Case Pump .....	<b>25</b>
<b>Fire Pump System Accessories</b> .....	<b>31</b>
<b>Control Panel</b> .....	<b>32</b>
<b>Pressure Tank</b> .....	<b>33</b>
<b>Fire Alarm Valve System</b> .....	<b>34</b>
<b>Sprinkler</b> .....	<b>39</b>
<b>Hydrant</b> .....	<b>40</b>
<b>Fire Blanket</b> .....	<b>42</b>
<b>Fire Hose Cabinet</b> .....	<b>43</b>
<b>Fire Hose/Fire Hose Reel/Fire Hose Coupling</b> .....	<b>44</b>



# Company Profile



**TAIZHOU PURITY IMP & EXP CO.,LTD** is a specialized manufacturer and supplier to provide our clients with advanced, effective and comprehensive fire protection equipment including fire pumps and system, valves, fire hydrant, fire extinguisher, fire alarm and detector, etc.

Our own factory Purity Pump Co., Ltd. is a professional manufacturer of high-quality industrial pumps, exporting to global market in competitive prices. We design and custom-build a wide range of fire pumps and systems.

Purity is consisting of R&D institute, main factory, machine workshop, rotor workshop, showroom in Wenling city, branches in Shanghai and Fujian.

Our products and services have been deployed in more than 50 countries. And we supply water pumps for many large projects like National Olympic Stadium. We also supply fire pumps to some well-known pump companies all over the world.

We have the latest Technology and quality products allowing us to give our customers the best service. We also focus on the feedback of all clients to ensure that equipment supplied is efficiently running and is properly used.

Aimed to "Life Safety From Purity", with the tenet of "innovation, high quality, customer satisfaction", we are striving for the top-ranking brand of fire equipment. And we are dedicated to the continual improvement of our customer service, products, and process.

Whatever the challenge you face, you can be sure we will assemble a project team that not only understands your technical parameters, but also your need too.

## Certificates





## Our Team



Purity Pump prides itself in being able to supply products of high quality, long lifecycle, excellent after-sale service and reasonable price.

01

We can handle all aspects of your needs from designing, sampling, and manufacturing of Pumps.

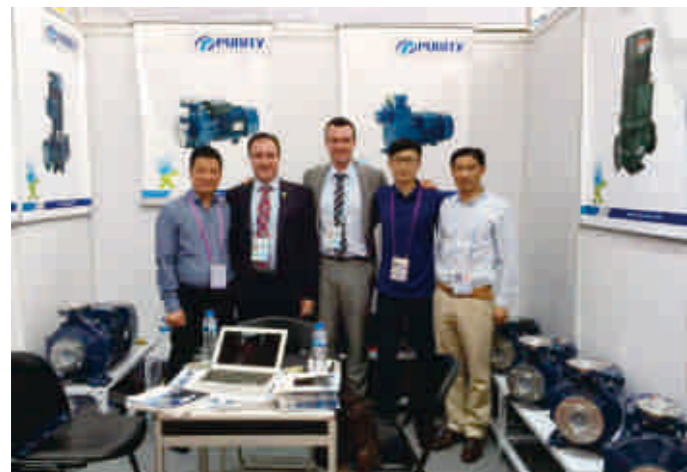
02

Our customers come to us because they know we stand behind our products

03



## Exhibitions



## Machinery



## Production Line





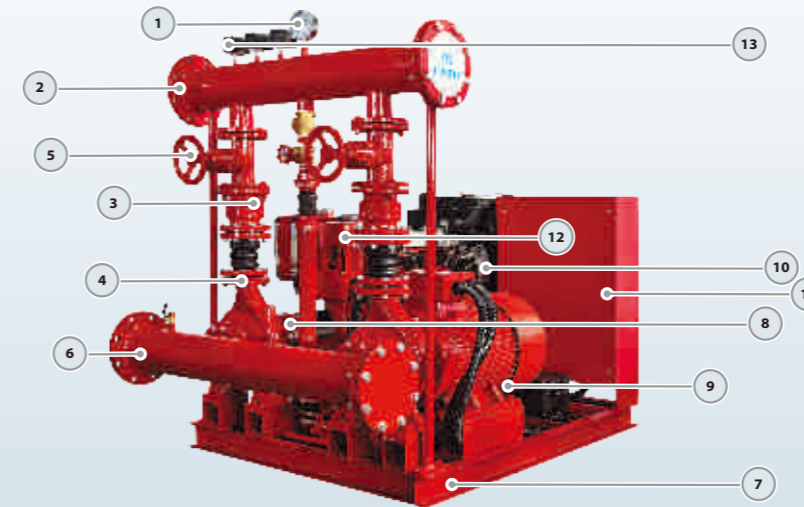
## Fire Fighting Pump System

PEDJ Fire Pump Set consists of **End Suction Centrifugal Pump** driven by Electric Motor, End Suction Diesel Pump, and **Vertical Jockey Pump**. Pumps are assembled with discharge line accessories as well as **Control Panel**.

Available Flow Capacities 50-1500GPM. Accessories include Suction pipe, Discharge pipe with Flanges, Battery, Gate Valves, Check Valves, Flexible Expansion Joints, Pressure Switches, Pressure Gauge, Base Frame, etc.

### Advantages

- ※ Switch Automatically among the three pumps
- ※ Both Manual and Automatic operation is available
- ※ Can work when the power is off
- ※ Easy Installation
- ※ Customized size and pump group
- ※ YE3 high efficient motor with protection IP55 class F
- ※ High performance and low power consumption
- ※ Pump case with Anti-corrosive coating
- ※ With quality NSK bearings, wear resistance mechanical seal
- ※ Circuit available up on request
- ※ Different Mounting Styles
- ※ Low Maintenance Cost and available spare parts
- ※ Electronic battery charger



- 1, Pressure Gauge
- 2, Discharge Pipe
- 3, Check valve
- 4, Flexible joint
- 5, Gate valve
- 6, Suction Pipe
- 7, Base
- 8, Diesel Pump
- 9, Electric Pump
- 10, Diesel Engine
- 11, Control Panel
- 12, Jockey pump
- 13, Pressure Switch

### TECHNICAL DATA

GPM	BAR	REGULAR MODEL	MOTOR PUMP 2900/3500 rpm	PUMP FOR ELECTRIC 2900/3500 rpm	PUMP FOR DIESEL 2900/3500 rpm
50	6	PEDJ50/6-5.5-5.5-2	P2C 32-200/40	-	PS 32-200/40
80	7	PEDJ80/7-10-8.6-3	PST 32-250/75	PS 32-250/75	PS 32-250/75
100		PEDJ100/7-10-8.6-3	PST 32-250/75	PS 32-250/75	PS 32-250/75
120		PEDJ120/7-10-10-3	PST 32-250/75D	PS 32-250/75H	PS 32-250/75H
150		PEDJ150/7-15-10-3	PST 40-250/110	PS 40-250/110	PS 40-250/110
200		PEDJ200/7-20-27-3	PST 40-250/150	PS 40-250/150	PS 40-250/150
250		PEDJ250/7-25-27-4	PST 50-250/185	PS 50-250/185	PS 50-250/185
300		PEDJ300/7-30-32-4	PST 50-250/220	PS 50-250/220	PS 50-250/220
350		PEDJ350/7-30-32-4	PST 50-250/220	PS 50-250/220	PS 50-250/220
400		PEDJ400/7-40-38-5.5	PST 65-250/300	PS 65-250/300	PS 65-250/300
500		PEDJ500/8-50-58-5.5	PST 65-250/370	PS 65-250/370	PS 65-250/370
750	8	PEDJ750/8-75-75-7.5	PST 80-250/550	PS 80-250/550	PS 80-250/550
1000		PEDJ1000/8-100-99-10	PST 100-250/750	PS 100-250/750	PS 100-250/750
1250		PEDJ1250/8-150-130-10	-	PS 125-250/1100	PS 125-250/1100
500	10	PEDJ500/10-60-61-7.5	-	PS 65-315/450	PS 65-315/450
750		PEDJ750/10-100-99-10	-	PS 80-315/750	PS 80-315/750
1000		PEDJ1000/10-125-113-12	-	PS 100-315/900	PS 100-315/900
1250		PEDJ1250/10-180-170-15	-	PS 125-315/1320	PS 125-315/1320
500	13	PEDJ500/13-100-99-12	-	PS 65-315/750	PS 65-315/750
750		PEDJ750/13-125-113-12	-	PS 80-315/900	PS 80-315/900
1000		PEDJ1000/13-150-130-15	-	PS 100-315/1100	PS 100-315/1100
1250		PEDJ1250/13-220-170-15	-	PS 125-315/1600	PS 125-315/1600
1500	PEDJ1500/13-220-170-15	-	PS 125-315/1600	PS 125-315/1600	

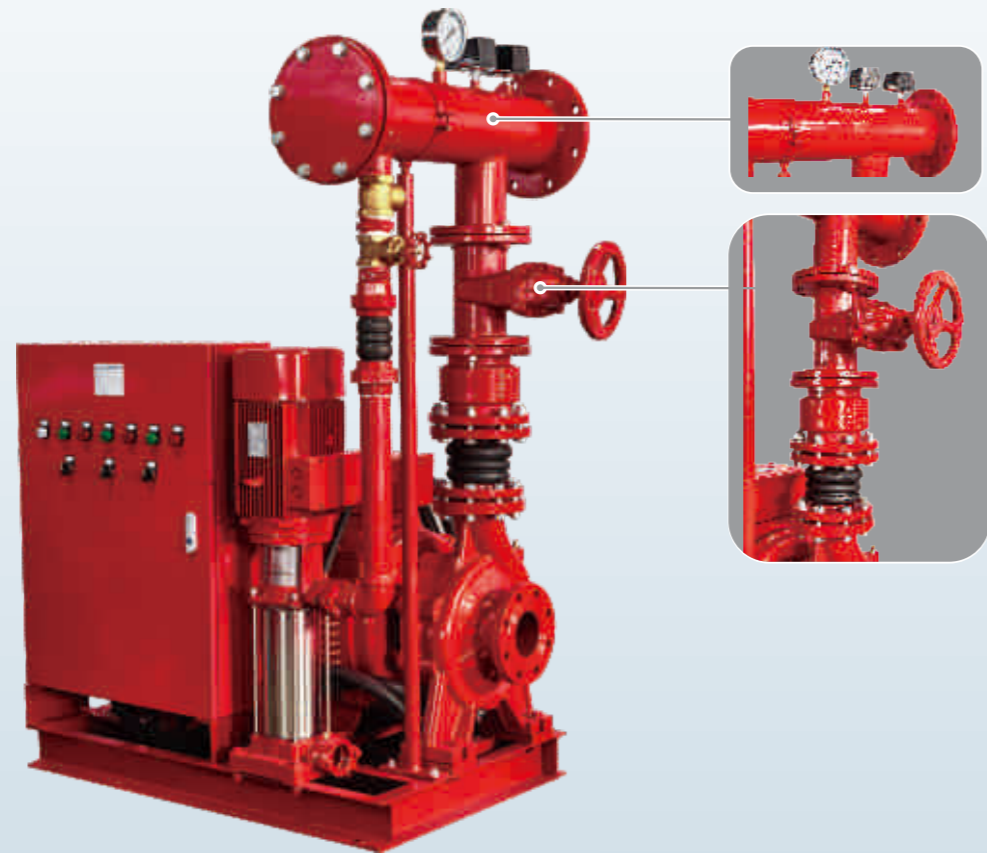
Other sizes can provide on request.

### TECHNICAL DATA

GPM	BAR	PUMP COUPLING MOTOR	MOTOR	DIESEL	JOCKEY	
					50HZ	60HZ
50	6	-	-	178-5.5HP	PV 4×9/2HP	PV 4×6/2HP
80	7	PSM 32-250/75	YE3-132S2-2-7.5kw	186-8.6HP	PV 6×11/3HP	PV 4×6/2HP
100		PSM 32-250/75	YE3-132S2-2-7.5kw	186-8.6HP	PV 6×11/3HP	PV 4×8/3HP
120		PSM 32-250/75H	YE3-132S2-2-7.5kw	192-10HP	PV 6×11/3HP	PV 4×8/3HP
150		PSM 40-250/110	YE3-160M1-2-11kw	192-10HP	PV 6×11/3HP	PV 4×8/3HP
200		PSM 40-250/150	YE3-160M2-2-15kw	380-27HP	PV 6×11/3HP	PV 4×8/3HP
250		PSM 50-250/185	YE3-160L-2-18.5kw	380-27HP	PV 8×12/4HP	PV 6×7/3HP
300		PSM 50-250/220	YE3-180M-2-22kw	385-32HP	PV 8×12/4HP	PV 8×8/4HP
350		PSM 50-250/220	YE3-180M-2-22kw	385-32HP	PV 8×12/4HP	PV 8×8/4HP
400		PSM 65-250/300	YE3-200L1-2-30kw	480-38HP	PV 12×12/5.5HP	PV 12×7/5.5HP
500		PSM 65-250/370	YE3-200L2-2-37kw	490N-58HP	PV 12×12/5.5HP	PV 12×7/5.5HP
750	8	PSM 80-250/550	YE3-250M-2-55kw	490Z-75HP	PV 12×17/7.5HP	PV 12×9/7.5HP
1000		PSM 100-250/750	YE3-280S-2-75kw	4102Z-99HP	PV 30×7/10HP	PV 12×11/10HP
1250		PSM 125-250/1100	YE3-315S-2-110kw	6102Q-130HP	PV 30×7/10HP	PV 30×5/10HP
500		10	PSM 65-315/450	YE3-225M-2-45kw	490-61HP	PV 12×17/7.5HP
750	PSM 80-315/750		YE3-280S-2-75kw	4102Z-99HP	PV 30×7/10HP	PV 12×11/10HP
1000	PSM 100-315/900		YE3-280M-2-90kw	4108Z-113HP	PV 30×9/12HP	PV 30×6/12HP
1250	PSM 125-315/1320		YE3-315M-2-132kw	6102ZS-170HP	PV 30×11/15HP	PV 30×8/15HP
500	13	PSM 65-315/750	YE3-280S-2-75kw	4102Z-99HP	PV 30×9/12HP	PV 12×11/10HP
750		PSM 80-315/900	YE3-280M-2-90kw	4108Z-113HP	PV 30×9/12HP	PV 30×6/12HP
1000		PSM 100-315/1100	YE3-315S-2-110kw	6102Q-130HP	PV 30×11/15HP	PV 30×8/15HP
1250		PSM 125-315/1600	YE3-315L1-2-160kw	6102ZS-170HP	PV 30×11/15HP	PV 30×8/15HP
1500	PSM 125-315/1600	YE3-315L1-2-160kw	6102ZS-170HP	PV 30×11/15HP	PV 30×8/15HP	

Other sizes can provide on request.

## PEJ Fire Pump Set with Electric+Jockey Pump



PEJ Fire Pump Set consists of **End Suction Centrifugal Pump** driven by Electric Motor and **Vertical Jockey Pump**. Pumps are assembled with discharge line accessories as well as **Control Panel**.

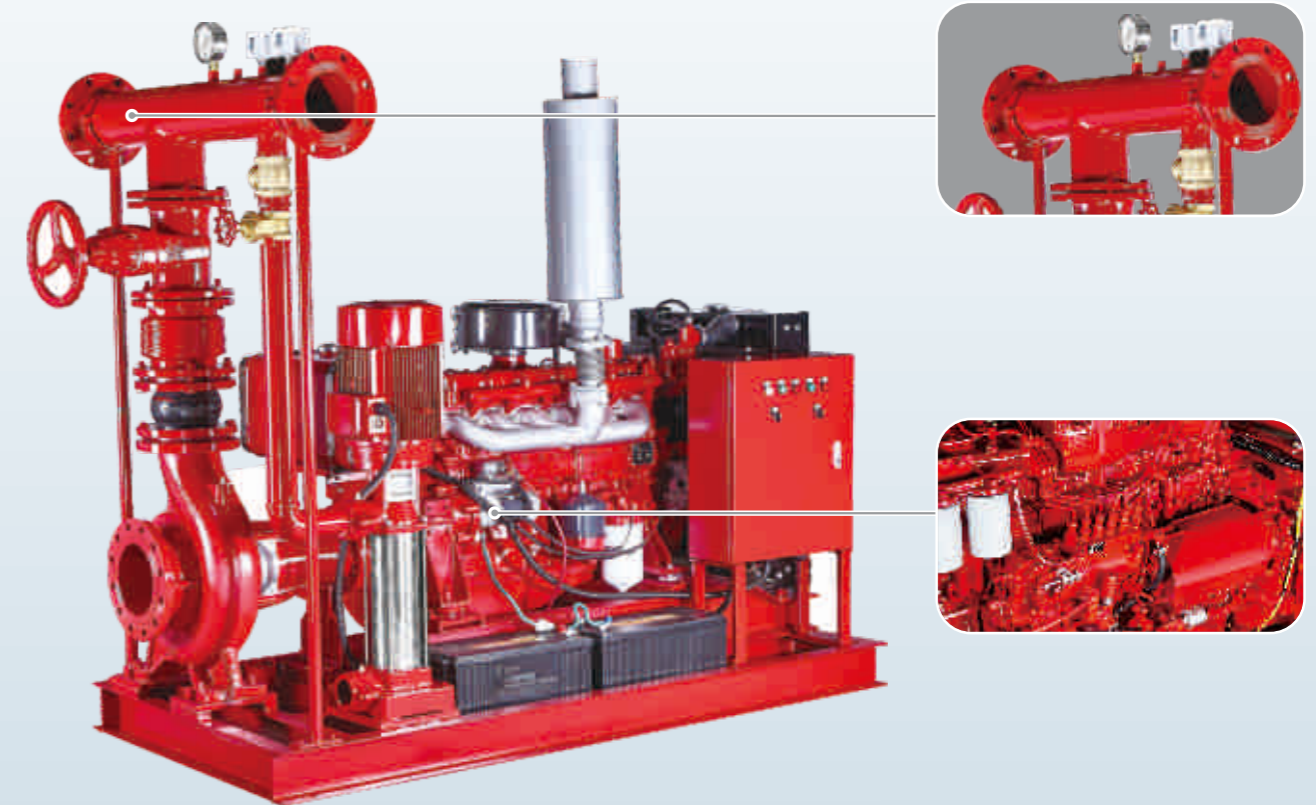
Available Flow Capacities 50-1500GPM.

### Advantages

- ※ Switch Automatically between the two pumps
- ※ Both Manual and Automatic operation is available
- ※ Easy Installation
- ※ Customized size and pump group
- ※ YE3 high efficient motor with protection IP55 class F
- ※ High performance and low power consumption
- ※ Pump case with Anti-corrosive coating
- ※ With quality NSK bearings, wear resistance mechanical seal
- ※ Circuit available up on request
- ※ Different Mounting Styles
- ※ Low Maintenance Cost and available spare parts

Model	Power Electric		Perform		Power Jockey
	kW	hp	Q GPM	H bar	HP
50/6-5.5-2	4	5.5	50	6	2
80/7-10-3	7.5	10	80	7	3
100/7-10-3	7.5	10	100	7	3
120/7-10-3	7.5	10	120	7	3
150/7-15-3	11	15	150	7	3
200/7-20-3	15	20	200	7	3
250/7-25-4	18.5	25	250	7	4
300/7-30-4	22	30	300	7	4
350/7-30-4	22	30	350	7	4
400/7-40-5.5	30	40	400	7	5.5
500/8-50-5.5	37	50	500	8	5.5
750/8-75-7.5	55	75	750	8	7.5
1000/8-100-10	75	100	1000	8	10
1250/8-150-10	110	150	1250	8	10
500/10-60-7.5	45	60	500	10	7.5
750/10-100-10	75	100	750	10	10
1000/10-125-12	90	125	1000	10	12
1250/10-180-15	132	180	1250	10	15
500/13-100-12	75	100	500	13	12
750/13-125-12	90	125	750	13	12
1000/13-150-15	110	150	1000	13	15
1250/13-220-15	160	220	1250	13	15
1500/13-220-15	160	220	1500	13	15

## PDJ Fire Pump Set with Diesel+Jockey Pump



PEJ Fire Pump Set consists of End Suction **Diesel Pump**, and **Vertical Jockey Pump**. Pumps are assembled with discharge line accessories as well as **Control Panel**.

Available Flow Capacities 50-1500GPM.

### Advantages

- ※ Switch Automatically between the two pumps
- ※ Both Manual and Automatic operation is available
- ※ Can work when the power is off
- ※ Easy Installation
- ※ Customized size and pump group
- ※ YE3 high efficient motor with protection IP55 class F
- ※ High performance and low power consumption
- ※ Pump case with Anti-corrosive coating
- ※ With quality NSK bearings, wear resistance mechanical seal
- ※ Circuit available up on request
- ※ Different Mounting Styles
- ※ Low Maintenance Cost and available spare parts
- ※ Electronic battery charger

Model	Perform		Power Diesel	Power Jockey
	Q GPM	H bar	HP	HP
50/6-5.5-2	50	6	5.5	2
80/7-8.6-3	80	7	8.6	3
100/7-8.6-3	100	7	8.6	3
120/7-10-3	120	7	10	3
150/7-10-3	150	7	10	3
200/7-27-3	200	7	27	3
250/7-27-4	250	7	27	4
300/7-32-4	300	7	32	4
350/7-32-4	350	7	32	4
400/7-38-5.5	400	7	38	5.5
500/8-58-5.5	500	8	58	5.5
750/8-75-7.5	750	8	75	7.5
1000/8-99-10	1000	8	99	10
1250/8-130-10	1250	8	130	10
500/10-61-7.5	500	10	61	7.5
750/10-99-10	750	10	99	10
1000/10-113-12	1000	10	113	12
1250/10-170-15	1250	10	170	15
500/13-99-12	500	13	99	12
750/13-113-12	750	13	113	12
1000/13-130-15	1000	13	130	15
1250/13-170-15	1250	13	170	15
1500/13-170-15	1500	13	170	15



## PS/PST/PSC/PSM Pump for Fire Fighting System



### TECHNICAL DESCRIPTION

- ※ New EN733 standard centrifugal pump
- ※ Original design by PURITY (patented)
- ※ Both square motor & round motor available
- ※ YE3 high efficient motor, with protection IP55 class F
- ※ Pump case with anti-corrosive coating
- ※ Impeller in stainless steel AISI 304 or cast iron
- ※ Shaft in stainless steel AISI 304 or galvanized iron
- ※ Galvanized counter flange with bolts, nuts and gaskets
- ※ Quality NSK bearing, wear resistance mechanical seal

### APPLICATIONS

Suitable for use with clean water and liquids that are not chemically aggressive towards the materials from which the pump is made. The EN733 centrifugal pumps are recommended for use in water supply, cleaning sets, pressure boosting, firefighting sets, irrigation, industrial applications, water circulation in climatization sets, agricultural.

### USING LIMITS

Liquid temperature between **-10°C** and **+120°C**  
 Ambient temperature up to **+50°C**  
 Max. working pressure **16 bar**  
 Continuous service **S1**

### PATENTS

Registered model PST  
 Registered Patent Design n° 201530478502.0

### STANDARD IMPELLER MATERIAL

DISCHARGE SIZE	IMPELLER SIZE						
	125	160	200	250	250D	315	400
32	Ss304	Ss304	Ss304	Cast iron	Ss304		
40	Cast iron	Cast iron	Ss304	Cast iron	/		
50	Cast iron	Cast iron	Cast iron	Cast iron	/		
65	Cast iron	Cast iron	Cast iron	Cast iron	/	Cast iron	
80	Cast iron	Cast iron	Cast iron	Cast iron	/	Cast iron	Cast iron
100		Cast iron	Cast iron	Cast iron	/	Cast iron	Cast iron
125			Cast iron	Cast iron	/	Cast iron	Cast iron
150			Cast iron	Cast iron	/	Cast iron	Cast iron
200				Cast iron	/	Cast iron	Cast iron
250					/	Cast iron	Cast iron

### TECHNICAL DATA

GPM	Bar	Pump for diesel 2900rpm	Pump for electric 3500rpm	Motor pump 3500rpm
80	7	PS32-250/75	PS32-200/75	PST32-200/75
100	7	PS32-250/75	PS32-200/75	PST32-200/75
120	7	PS32-250/75H	PS32-200/75H	PST32-200/75D
150	7	PS40-250/110	PS40-200/110	PST40-200/110
200	7	PS40-250/150	PS40-200/150	PST40-200/150
250	7	PS50-250/185	PS50-200/185	PST50-200/185
300	7	PS50-250/220	PS50-200/220	PST50-200/220
350	7	PS50-250/220	PS50-200/220	PST50-200/220
400	7	PS65-250/300	PS65-200/300	PST65-200/300
500	7	PS65-250/300	PS65-200/300	PST65-200/300
500	8	PS65-250/370	PS65-200/370	PST65-200/370
500	9	PS65-315/370	PS65-250/370	-
500	10	PS65-315/450	PS65-250/450	-
500	11	PS65-315/550	PS65-250/550	-
500	12	PS65-315/750	PS65-250/750	-
500	13	PS65-315/750	PS65-250/750	-
750	7	PS80-250/450	PS80-200/450	PST80-200/450
750	8	PS80-250/550	PS80-200/550	PST80-200/550
750	9	PS80-315/750	PS80-250/750	-
750	10	PS80-315/750	PS80-250/750	-
750	11	PS80-315/750	PS80-250/750	-
750	12	PS80-315/900	PS80-250/900	-
750	13	PS80-315/900	PS80-250/900	-
1000	7	PS100-250/550	PS100-200/550	PST100-200/550
1000	8	PS100-250/750	PS100-200/750	PST100-200/750
1000	9	PS100-315/750	PS100-250/750	-
1000	10	PS100-315/900	PS100-250/900	-
1000	11	PS100-315/900	PS100-250/900	-
1000	12	PS100-315/1100	PS100-250/1100	-
1000	13	PS100-315/1100	PS100-250/1100	-
1000	14	PSC80-370A1/1320	PSC80-370A1/1320	-
1000	15	PSC80-370A1/1320	PSC80-370A1/1320	-
1250	7	PS125-250/900	PS125-200/900	-
1250	8	PS125-250/1100	PS125-200/1100	-
1250	9	PS125-315/1100	PS125-250/1100	-
1250	10	PS125-315/1320	PS125-250/1320	-
1250	11	PS125-315/1320	PS125-250/1320	-
1250	12	PS125-315/1600	PS125-250/1600	-
1250	13	PS125-315/1600	PS125-250/1600	-

### 50/60 Hz n=2900/3500 1/min

GPM	Bar	Pump for diesel 2900rpm	Pump for electric 3500rpm	Motor pump 3500rpm
1250	14	PSC100-375A2/2000	PSC100-375A2/2000	-
1250	15	PSC100-375A2/2000	PSC100-375A2/2000	-
1250	17	PSC100-375B1/2500	PSC100-375B1/2500	-
1500	8	PS125-250/1100	PS125-200/1100	-
1500	9	PS125-315/1100	PS125-250/1100	-
1500	10	PS125-315/1320	PS125-250/1320	-
1500	11	PS125-315/1320	PS125-250/1320	-
1500	12	PS125-315/1600	PS125-250/1600	-
1500	13	PS125-315/1600	PS125-250/1600	-
1500	15	PSC100-375B1/2500	PSC100-375B1/2500	-
1500	18	PSC100-375A1/2500	PSC100-375A1/2500	-
2000	8	PS150-250/1600	PS150-200/1600	-
2000	10	PS150-315/2000	PS150-250/2000	-
2000	11	PSC125-290A1/2000	PSC125-290A1/2000	-
2000	12	PSC125-365A3/2500	PSC125-365A3/2500	-
2000	13	PS150-315/2500	PS150-250/2500	-
2000	15	PSC125-365A2/3150	PSC125-365A2/3150	-
2000	17	PSC125-365B1/3550	PSC125-365B1/3550	-
2500	8	PS150-250/1600	PS150-200/1600	-
2500	10	PS150-315/2000	PS150-250/2000	-
2500	12	PS150-315/2500	PS150-250/2500	-
2500	13	PSC150-460B2/3150	PSC150-460B2/3150	-
2500	15	PSC125-365A2/3550	PSC125-365A2/3550	-
2500	17	PSC125-365B1/3550	PSC125-365B1/3550	-
3000	10	PSC150-360A3/2500	PSC150-360A3/2500	-
3000	12	PSC150-360A2/3550	PSC150-360A2/3550	-
3000	13	PSC150-460B2/3550	PSC150-460B2/3550	-
3000	14	PSC150-360B1/4000	PSC150-360B1/4000	-
3000	16	PSC150-460B1/4500	PSC150-460B1/4500	-
4000	11	PSC200-420B3/4000	PSC200-420B3/4000	-
4000	14	PSC200-420B2/5000	PSC200-420B2/5000	-
4000	15	PSC150-360A1/5000	PSC150-360A1/5000	-
4000	17	PSC150-460A1/5600	PSC150-460A1/5600	-
5000	10	PSC200-320B2/4000	PSC200-320B2/4000	-
5000	11	PSC200-320B1/5000	PSC200-320B1/5000	-
5000	12	PSC200-320A1/5600	PSC200-320A1/5600	-
5000	14	PSC200-420A2/5600	PSC200-420A2/5600	-
5000	16	PSC200-420B1/7100	PSC200-420B1/7100	-
5000	17	PSC200-420A1/8000	PSC200-420A1/8000	-

Other sizes can provide on request.

**TECHNICAL DATA**

50 Hz n=2900 1/min  
60 Hz n=3500 1/min

MODEL	Power		us gpm l/min	Q=DELIVERY																			DN mm
	kw	hp		0	26	40	66	79	106	119	159	185	211	238	317	370	396	476	529	608	793	925	
				0	100	150	250	300	400	450	600	700	800	900	1200	1400	1500	1800	2000	2300	3000	3500	
32-125/07	0.75	1	17.5	16.7	15	12	9															50x32	
32-125/11	1.1	1.5	22	21	19.7	16.5	14.5	9														50x32	
32-160/15	1.5	2	25.4	23.7	22.5	18.5	15.8															50x32	
32-160/22	2.2	3	31	29.6	28.5	24.5	22	15														50x32	
32-160/30	3	4	35	34.3	34	28	25.5	19	15													50x32	
32-200/30	3	4	44.2	43	39.8	35.2	32.2	24.6	19.8													50x32	
32-200/40	4	5.5	54.5	52	50	45.5	41.9	35	30.3													50x32	
32-250/55	5.5	7.5	60	59.5	59	55	51	34.5														50x32	
32-250/75	7.5	10	69.5	69	68.5	66	63	53														50x32	
32-250/110	11	15	90	89.5	89	82	79	66														50x32	
32-250/55D	5.5	7.5	79.5	74.7	71.8	63	56	37.5														50x32	
32-250/75D	7.5	10	95	93	91	83	76	57.8														50x32	
40-125/11	1.1	1.5	14.7				13.5	11.5	10.1	5.8												65x40	
40-125/15	1.5	2	18.1				17	15	13.9	9.6	6											65x40	
40-125/22	2.2	3	24.5				23.2	21.5	20.2	16	13	8.3										65x40	
40-160/30	3	4	31.8				29.5	27.5	26.3	21.5	17.5											65x40	
40-160/40	4	5.5	38				36	34	33	28.5	25	20.1										65x40	
40-200/55	5.5	7.5	46				43.8	41.3	40.1	35	30											65x40	
40-200/75	7.5	10	57				53.6	51.5	50	45	41	36.5										65x40	
40-250/92	9.2	12.5	64				59	56.5	55	49.5	45	39.8										65x40	
40-250/110	11	15	72				67.5	66	63.5	57.5	52.2	47										65x40	
40-250/150	15	20	84.5				80	77.3	75.2	71	65	61										65x40	
50-125/22	2.2	3	17							15.4	14	12.8	11.5	6.5								65x50	
50-125/30	3	4	20							18.8	18	17	15.6	11								65x50	
50-125/40	4	5.5	24							23.1	23	21.5	20.3	15.8	11.8							65x50	
50-160/55	5.5	7.5	32							30.6	30	28	26.6	20.5	14.8							65x50	
50-160/75	7.5	10	40							38	37	36	34.4	29	24	21						65x50	
50-200/92	9.2	12.5	50.5							46.8	45	43	40.9	32.5	26.7							65x50	
50-200/110	11	15	57.5							53.5	52	50	47.5	40	34	29						65x50	
50-200/150	15	20	62							58	56.5	54.5	52	44.5	39	35.5						65x50	
50-250/150	15	20	68.5							64	63	61.5	59	50	41							65x50	
50-250/185	18.5	25	79							75.8	74.8	74	71.5	63.5	55.5	47						65x50	
50-250/220	22	30	89.5							86	85.3	84	81.5	73.5	65.5	57						65x50	
65-125/40	4	5.5	19									17.3	16.8	14.5	13	11.8						80x65	
65-125/55	5.5	7.5	23									21.3	20.9	19	17.5	16.7	13.7					80x65	
65-125/75	7.5	10	27								26	25.6	24.5	23	22.5	20	18					80x65	
65-160/92	9.2	12.5	33									31.5	30	28	27.1	24	21.5					80x65	
65-160/110	11	15	36									34.5	33	31.5	30.8	28	25.5					80x65	
65-160/150	15	20	42									41	40	38.5	37.8	35	33	29.5				80x65	
65-200/150	15	20	45									45.5	43	41	40.2	36.5	34					80x65	
65-200/185	18.5	25	52									52.3	51	49	48.2	44.5	42					80x65	
65-200/220	22	30	59									59.5	58	56	55	52	49.5	44.5				80x65	
65-250/220	22	30	64.8									64.7	62	60	58.5	53	50					80x65	
65-250/300	30	40	80									79.8	77.5	75.5	74.5	70	66	58				80x65	
65-250/370	37	50	92									90.5	88.5	87	85	80.5	78	68				80x65	
65-315/370	37	50	102									99.2	97	95	94.5	92.4	90	83				80x65	
65-315/450	45	60	112									109.2	107.7	105.8	104.5	102.5	100	93	66			80x65	
65-315/550	55	75	122									119.2	117.4	115.7	114.5	112.5	110	103	76			80x65	
65-315/750	75	100	141									139.8	137.3	135.6	134.5	132.5	130	122	96	65.5		80x65	
80-125/40	4	5.5	17								16.5	15.9	14.3	13.5	11.6	10	7.5					100x80	
80-125/55	5.5	7.5	21									20.5	20	19	18	16.5	15	12.5	9.5			100x80	
80-125/75	7.5	10	26									25	25	24.5	23.8	22.5	21.5	19.5	16.5			100x80	

◦ =PST available   ◐ =PS available   • =PST&PS available

**TECHNICAL DATA**

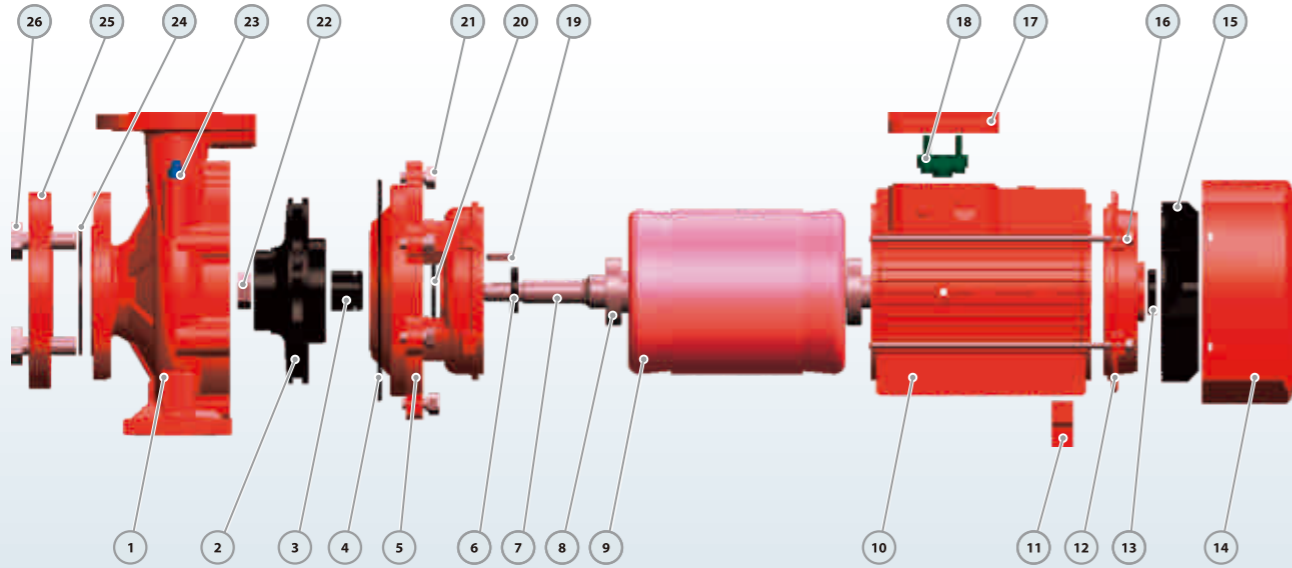
50 Hz n=2900 1/min  
60 Hz n=3500 1/min

MODEL	Power		us gpm l/min	Q=DELIVERY																			DN mm
	kw	hp		0	264	396	529	634	793	881	925	969	1057	1233	1322	1586	1762	2203	2643	3524	4405		
				0	1000	1500	2000	2400	3000	3333	3500	3666	4000	4666	5000	6000	6666	8333	10000	13333	16666		
80-160/110	11	15	27	27	27.3	24.5	21.1	16														100x80	
80-160/150	15	20	32.8	32.6	32.5	30.2	27	22.1	18.5	16.7												100x80	
80-160/185	18.5	25	39	38.5	38	36.7	33.6	28.8	25.3	23.5												100x80	
80-160/220	22	30	44	43.5	43	41.7	38.6	33.8	30.3	28.5												100x80	
80-200/220	22	30	48	47.7	47.5	43.5	39.2	32.5	27.2	24.5												100x80	
80-200/300	30	40	60	59.7	59.5	57	53.1	47	42.7	40.5												100x80	
80-250/370	37	50	71.5	70.9	70.5	65.5	59.3	51	43.2	38.5												100x80	
80-250/450	45	60	88	86.7	86	83.6	78.5	70.5	60	51												100x80	
80-250/550	55	75	94.5	94.5	94.5	91.8	87	79.5	72.1	68.3												100x80	
80-315/450	45	60	85	84	82.6	82	78	68.3	61	56												100x80	
80-315/550	55	75	98	97	95.6	95	91	81.3	74	69												100x80	
80-315/750	75	100	124	123	121.6	121	117	107.3	100	95	90	80.8										100x80	
80-315/900	90	125	144	143	141.6	141	137	127.3	120	115	110	100.8										100x80	
100-160/150	15	20	35	33.5	32.5	30	27.8	24.5	21.5	20	18.3	15										125x100	
100-160/185	18.5	25	38.5	37.5	36.5	34.3	32.2	29	25.7	24	22	18										125x100	
100-160/220	22	30	43	41	40	37.6	35.2	31.5	28.5	27	25.3	22										125x100	
100-200/220	22	30	38.5	36.7	35.7	33.8	31.7	28.5	26.8	26	25	22.9	16.3	13								125x100	
100-200/300	30	40	44.5	42.5	42	40.2	38.8	36.7	34.2	33	31.7	29	21.7	18								125x100	
100-200/370	37	50	55	53	51	50.6	49.2	47	45	44	42.8	40.5	32.8	29								125x100	
100-250/450	45	60	65	65	64	63	61	58	56	55	53.3	50	39	33.5								125x100	
100-250/550	55	75	77	76	75.5	75	73.8	72	71.7	71.5	70.7</												



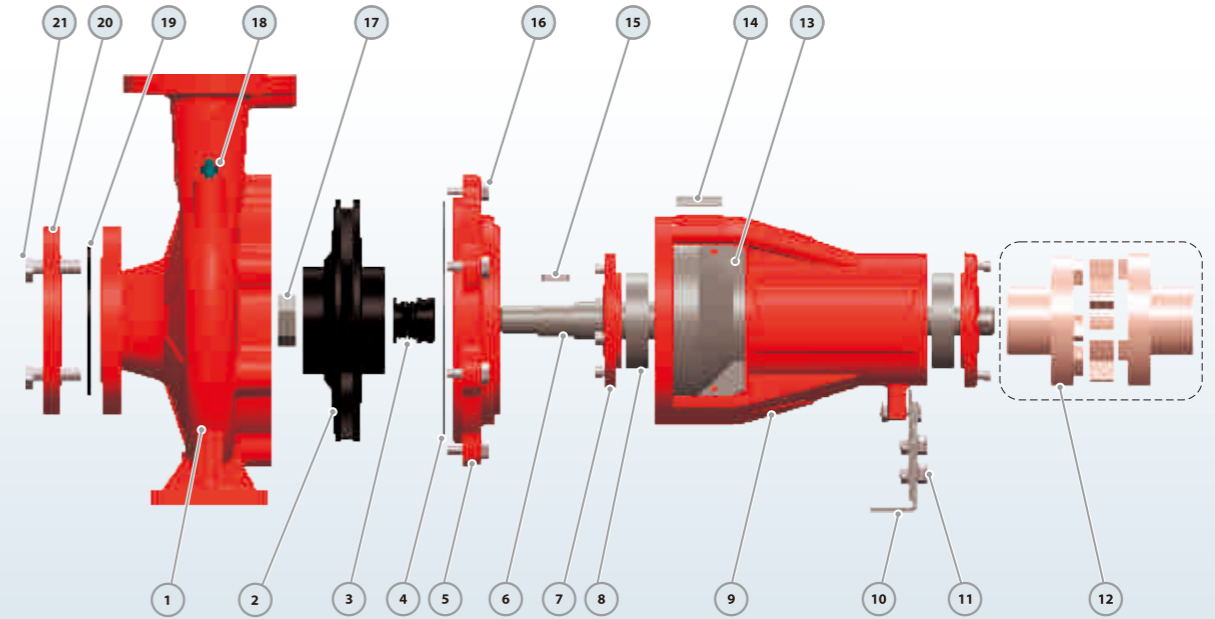


**MATERIAL DESCRIPTION**



No.	Description	Material	No.	Description <i>Descripción</i>	Material <i>Material</i>	No.	Description <i>Descripción</i>	Material <i>Material</i>
1	Pump Case	Cast iron	10	Motor Case	Aluminum	19	Impeller Key	Iron
2	Impeller	SS304/Cast iron	11	Support Foot	Plastic	20	Water Deflector	Rubber
3	Mechanical Seal	SiC/Carbon/SS304	12	Back Cover	Cast iron	21	Connection Bolt	Steel
4	O-ring	Rubber	13	Reinforced Seal	Rubber	22	Impeller Nut	Galvanized Steel
5	Connection	Cast iron	14	Fan Cover	Aluminum	23	Release Valve	Brass
6	Reinforced Seal	Rubber	15	Fan	Plastic	24	Gasket	Rubber
7	Shaft	SS304/45# Steel	16	Through Bolt	Steel	25	Counter Flange	Galvanized Cast iron
8	Bearing	Ball Bearing	17	Terminal Box	Aluminum	26	Flange Bolt	Steel
9	Wound Stator/Rotor	Silicon Steel/Copper	18	<i>Terminal Board</i>	Plastic			

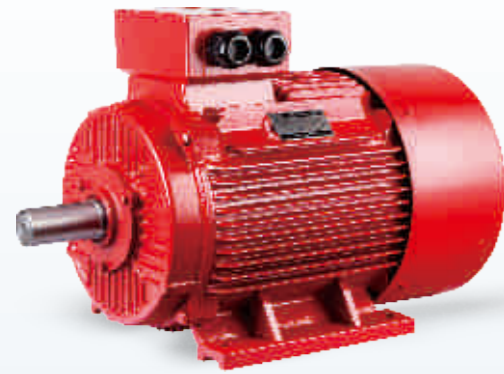
**MATERIAL DESCRIPTION**



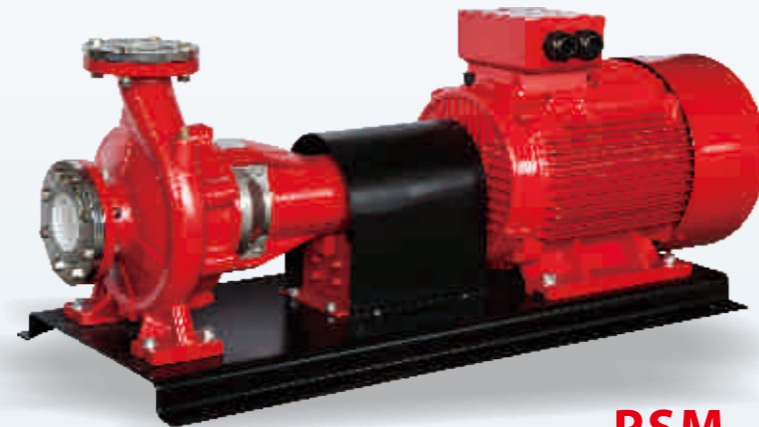
No.	Description	Material	No.	Description	Material	No.	Description	Material
1	Pump Case	Cast iron	8	Bearing	Ball Bearing	15	Impeller Key	Iron
2	Impeller	SS304/Cast iron	9	Support Case	Cast iron	16	Connection Bolt	Steel
3	Mechanical Seal	SiC/Carbon/SS304	10	Support Foot	Iron	17	Impeller Nut	Galvanized Steel
4	O-ring	<i>Rubber</i>	11	Foot Bolt	Steel	18	Release Valve	Brass
5	Connection	Cast iron	12	Coupling(Optional)	Steel	19	Gasket	Rubber
6	Shaft	SS304/45# Steel	13	Case Cover	SS304	20	Counter Flange	Galvanized Cast iron
7	Bearing Cover	Cast iron	14	Nameplate	Aluminum	21	Flange Bolt	Steel



## PSM Centrifugal Pump Coupled with Electric Motor



### YE3 Electric Motor for Pumps



### PSM



### PSM-C End Suction Pump with Control Pannel

#### YE-3 Electric Motor for Pumps

##### Technical Specifications

- ✧ Can be offered separately
- ✧ YE3 high efficient motor with protection IP55 class F
- ✧ Pump case with Anti-corrosive coating
- ✧ With quality NSK bearings, wear resistance mechanical seal
- ✧ Easy Installation

##### USING LIMITS

- ✧ Liquid temperature between -10°C and +120°C
- ✧ Ambient temperature up to +50°C
- ✧ Max. working pressure **16 bar**
- ✧ Continuous service **S1**

#### TECHNICAL DATA FOR ELECTRIC MOTOR

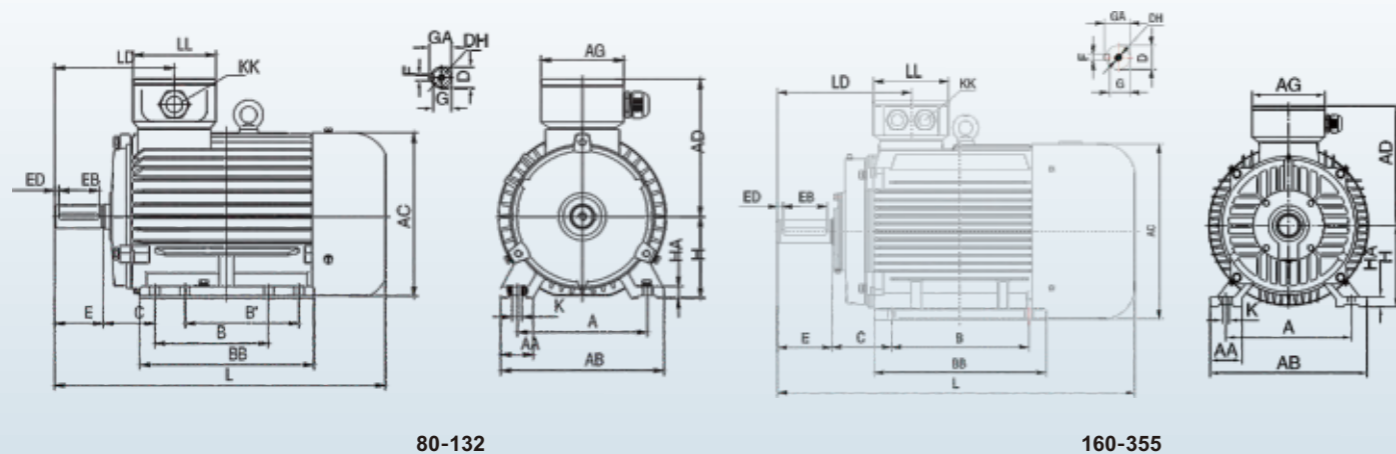
50Hz

MODEL	Power		rpm	η%	η% at 75%	η% at 50%	cosφ	A			Nm	Tmax/Tn	Ts/Tn	Is/n	kg
	kw	hp						380V	400V	415V					
YE3-801-2	0.75	1	2880	80.7	80.7	79.1	0.82	1.72	1.64	1.58	2.49	2.3	2.3	7.0	18.1
YE3-802-2	1.1	1.5	2880	82.7	82.7	81.0	0.83	2.43	2.31	2.23	3.65	2.2	2.3	7.3	19.5
YE3-90S-2	1.5	2	2895	84.2	84.2	82.5	0.84	3.22	3.06	2.95	4.95	2.2	2.3	7.6	23.3
YE3-90L-2	2.2	3	2895	85.9	85.9	84.2	0.85	4.58	4.35	4.19	7.26	2.2	2.3	7.6	27.1
YE3-100L-2	3	4	2895	87.1	87.1	85.4	0.87	6.02	5.71	5.51	9.90	2.2	2.3	7.8	38.8
YE3-112M-2	4	5.5	2905	88.1	88.1	86.3	0.88	7.84	7.45	7.18	13.1	2.2	2.3	8.3	48.3
YE3-132S1-2	5.5	7.5	2930	89.2	89.2	87.4	0.88	10.6	10.1	9.75	17.9	2.0	2.3	8.3	55.1
YE3-132S-2	7.5	10	2930	90.1	90.1	88.3	0.88	14.4	13.7	13.2	24.4	2.0	2.3	7.9	69.2
YE3-160M1-2	11	15	2945	91.2	91.2	89.4	0.89	20.6	19.6	18.9	35.7	2.0	2.3	8.1	113
YE3-160M2-2	15	20	2945	91.9	91.9	90.1	0.89	27.9	26.5	25.5	48.6	2.0	2.3	8.1	123
YE3-160L-2	18.5	25	2940	92.4	92.4	90.6	0.89	34.2	32.5	31.3	60.1	2.0	2.3	8.2	142
YE3-180M-2	22	30	2955	92.7	92.7	90.8	0.89	40.5	38.5	37.1	71.1	2.0	2.3	8.2	182
YE3-200L1-2	30	40	2960	93.3	93.3	91.4	0.89	54.9	52.1	50.3	96.8	2.0	2.3	7.6	246
YE3-200L2-2	37	50	2960	93.7	93.7	91.8	0.89	67.4	64.0	61.7	119.4	2.0	2.3	7.6	265
YE3-225M-2	45	60	2965	94.0	94.0	92.1	0.90	80.8	76.8	74.0	144.9	2.0	2.3	7.7	323
YE3-250M-2	55	75	2970	94.3	94.3	92.4	0.90	98.5	93.5	90.2	176.9	2.0	2.3	7.7	413
YE3-280S-2	75	100	2975	94.7	94.7	92.8	0.90	134	127	122	240.8	1.8	2.3	7.1	546
YE3-280M-2	90	125	2975	95.0	95.0	93.1	0.90	160	152	146	288.9	1.8	2.3	7.1	569
YE3-315S-2	110	150	2978	95.2	95.2	93.3	0.90	195	185	179	352.8	1.8	2.3	7.1	897
YE3-315M-2	132	180	2978	95.4	95.4	93.5	0.90	234	222	214	423.3	1.8	2.3	7.1	1029
YE3-315L1-2	160	220	2980	95.6	95.6	93.7	0.91	279	265	256	512.8	1.8	2.3	7.2	1067
YE3-315L2-2	200	270	2980	95.8	95.8	93.9	0.91	349	331	319	640.9	1.8	2.2	7.2	1194
YE3-355M-2	250	340	2982	95.8	95.8	93.9	0.91	436	414	399	800.6	1.6	2.2	7.2	1685
YE3-355L-2	315	430	2982	95.8	95.8	93.9	0.91	549	522	503	1009	1.6	2.2	7.2	1734

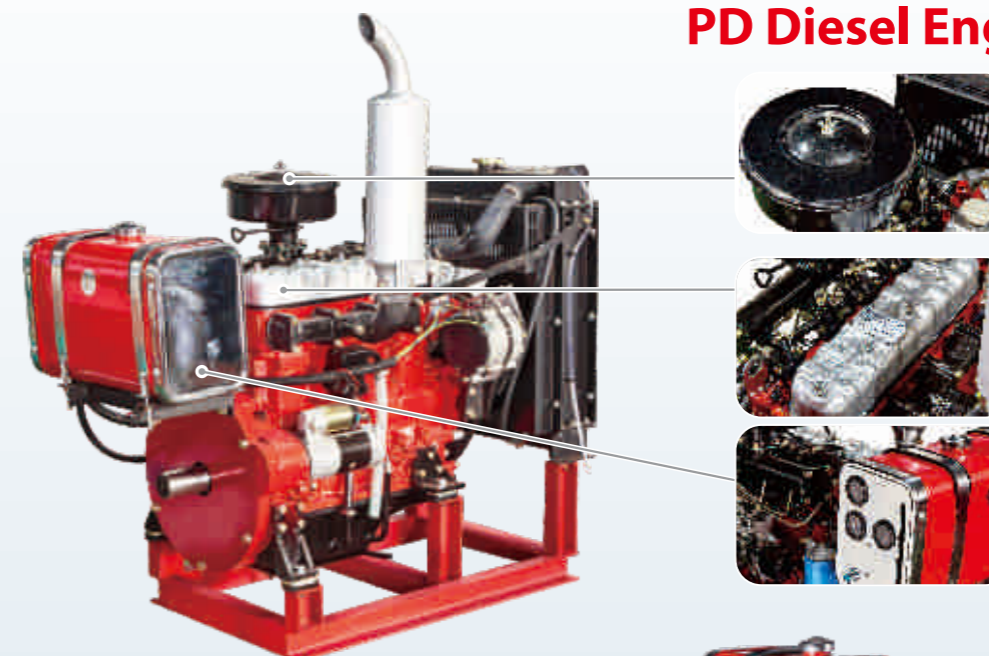
60Hz

MODEL	Power		rpm	η%	η% at 75%	η% at 50%	cosφ	A		Nm	Tmax/Tn	Ts/Tn	Is/n	kg
	kw	hp						220V	380V					
YE3-801-2	0.75	1	3500	80.7	80.7	79.1	0.82	3.6	1.83	2.49	2.3	2.3	7.0	18.1
YE3-802-2	1.1	1.5	3500	82.7	82.7	81.0	0.83	4.5	2.58	3.65	2.2	2.3	7.3	19.5
YE3-90S-2	1.5	2	3500	84.2	84.2	82.5	0.84	6.8	3.43	4.95	2.2	2.3	7.6	23.3
YE3-90L-2	2.2	3	3500	85.9	85.9	84.2	0.85	9.6	4.85	7.26	2.2	2.3	7.6	27.1
YE3-100L-2	3	4	3500	87.1	87.1	85.4	0.87	11.5	6.31	9.90	2.2	2.3	7.8	38.8
YE3-112M-2	4	5.5	3500	88.1	88.1	86.3	0.88	14.5	8.1	13.1	2.2	2.3	8.3	48.3
YE3-132S1-2	5.5	7.5	3500	89.2	89.2	87.4	0.88	22	11	17.9	2.0	2.3	8.3	55.1
YE3-132S-2	7.5	10	3500	90.1	90.1	88.3	0.88	28	14.9	24.4	2.0	2.3	7.9	69.2
YE3-160M1-2	11	15	3500	91.2	91.2	89.4	0.89	42	21.3	35.7	2.0	2.3	8.1	113
YE3-160M2-2	15	20	3500	91.9	91.9	90.1	0.89	54	28.8	48.6	2.0	2.3	8.1	123
YE3-160L-2	18.5	25	3500	92.4	92.4	90.6	0.89	68	34.7	60.1	2.0	2.3	8.2	142
YE3-180M-2	22	30	3500	92.7	92.7	90.8	0.89	80	41	71.1	2.0	2.3	8.2	182
YE3-200L1-2	30	40	3500	93.3	93.3	91.4	0.89	104	55.5	96.8	2.0	2.3	7.6	246
YE3-200L2-2	37	50	3500	93.7	93.7	91.8	0.89	130	67.9	119.4	2.0	2.3	7.6	265
YE3-225M-2	45	60	3500	94.0	94.0	92.1	0.90	150	82.3	144.9	2.0	2.3	7.7	323
YE3-250M-2	55	75	3500	94.3	94.3	92.4	0.90	192	101	176.9	2.0	2.3	7.7	413
YE3-280S-2	75	100	3500	94.7	94.7	92.8	0.90	245	134	240.8	1.8	2.3	7.1	546
YE3-280M-2	90	125	3500	95.0	95.0	93.1	0.90	312	160	288.9	1.8	2.3	7.1	569
YE3-315S-2	110	150	3500	95.2	95.2	93.3	0.90	400	195	352.8	1.8	2.3	7.1	897
YE3-315M-2	132	180	3500	95.4	95.4	93.5	0.90	425	233	423.3	1.8	2.3	7.1	1029
YE3-315L1-2	160	220	3500	95.6	95.6	93.7	0.91	600	279	512.8	1.8	2.3	7.2	1067
YE3-315L2-2	200	270	3500	95.8	95.8	93.9	0.91	630	349	640.9	1.8	2.2	7.2	1194
YE3-355M-2	250	340	3500	95.8	95.8	93.9	0.91	800	436	800.6	1.6	2.2	7.2	1685
YE3-355L-2	315	430	3500	95.8	95.8	93.9	0.91	990	549	1009	1.6	2.2	7.2	1734

**DIMENSIONS**



**PD Diesel Engine for Pumps**



MODEL	DIMENSIONS mm																							
	A	AA	AB	AC	AD	AG	B	BB	C	D	DH	E	EB	ED	F	G	GA	H	HA	K	KK	L	LD	LL
80	125	34	160	167	147	102	100	150	50	19	M6X16	40	30	2.5	6	15.5	21.5	80	10	4-Φ10	1-M25X1.5	304	119	102
90S	140	36	176	182.4	154.5	102	100	161	56	24	M8X19	50	40	5	8	20	27	90	12	4-Φ10	1-M25X1.5	336	143	102
90L	140	36	176	182.4	154.5	102	125	186	56	24	M8X19	50	40	5	8	20	27	90	12	4-Φ10	1-M25X1.5	361	143	102
100L	160	40	200	205.4	166	102	140	213	63	28	M10X22	60	50	5	8	24	31	100	14	4-Φ12	1-M32X1.5	406	147	102
112M	190	50	240	230	188	118	140	188	70	28	M10X22	60	50	5	8	24	31	112	15	4-Φ12	2-M32X1.5	394	147	110
132S	216	55	265	258.4	203	118	140	186	89	38	M12X28	80	65	5	10	33	41	132	18	4-Φ12	2-M32X1.5	438	172	110
132M	216	55	265	258.4	203	118	178	224	89	38	M12X28	80	65	7.5	10	33	41	132	18	4-Φ12	2-M32X1.5	476	172	110
160M	254	65	314	314	251	162	210	260	108	42	M16X36	110	90	7.5	12	37	45	160	20	4-Φ14.5	2-M40X1.5	608	256	152
160L	254	65	314	314	251	162	254	304	108	42	M16X36	110	90	10	12	37	45	160	20	4-Φ14.5	2-M40X1.5	652	256	152
180M	279	70	349	355	267	162	241	311	121	48	M16X36	110	90	10	14	42.5	51.5	180	22	4-Φ14.5	2-M40X1.5	688	271	152
180L	279	70	349	355	267	162	279	349	121	48	M16X36	110	90	10	14	42.5	51.5	180	22	4-Φ14.5	2-M40X1.5	726	271	152
200L	318	70	388	397	299	210	305	369	133	55	M20X42	110	100	10	16	49	59	200	25	4-Φ18.5	2-M50X1.5	779	296	190
225S	356	75	431	446	322	210	286	368	149	60	M20X42	140	125	5	18	53	64	225	28	4-Φ18.5	2-M50X1.5	824	329	190
225M	356	75	431	446	322	210	311	393	149	55	M20X42	110	100	7.5	16	49	59	225	28	4-Φ18.5	2-M50X1.5	819	299	190
250M	406	80	484	485	358	248	349	445	168	60	M20X42	140	125	7.5	18	53	64	250	30	4-Φ24	2-M63X1.5	910	347	218
280S	457	85	542	547	387	248	368	485	190	65	M20X42	140	125	7.5	18	58	69	280	35	4-Φ24	2-M63X1.5	982	355.5	218
280M	457	85	542	547	387	248	419	536	190	65	M20X42	140	125	7.5	18	58	69	280	35	4-Φ24	2-M63X1.5	1033	355.5	218
315S	508	120	628	620	527	320	406	570	216	65	M20X42	140	125	7.5	18	58	69	315	45	4-Φ28	2-M63X1.5	1194	397	280
315M	508	120	628	620	527	320	457	680	216	65	M20X42	140	125	7.5	18	58	69	315	45	4-Φ28	2-M63X1.5	1304	397	280
315L	508	120	628	620	527	320	508	680	216	65	M20X42	140	125	7.5	18	58	69	315	45	4-Φ28	2-M63X1.5	1304	397	280
355M	610	116	726	698	642	380	560	750	254	75	M20X42	140	130	5	20	67.5	79.5	355	52	6-Φ28	2-M63X1.5	1486	414	330
355L	610	116	726	698	642	380	630	750	254	75	M20X42	140	130	5	20	67.5	79.5	355	52	6-Φ28	2-M63X1.5	1486	414	330



**PSD Centrifugal Pump Coupled with Diesel Engine**

**TECHNICAL DESCRIPTION**

- ※ More Environmentally Friendly
- ※ Meeting China III Emission Standard
- ※ Low Fuel Consumption
- ※ Strong Power
- ※ Easy To Assemble

**APPLICATIONS**

Suitable for use with clean water and liquids that are not chemically aggressive towards the materials from which the pump is made. The diesel engine pumps are recommended for use in water supply, cleaning sets, pressure boosting, firefighting sets, irrigation, industrial applications, water circulation in climatisation sets, agricultural.

**USING LIMITS**

Liquid temperature between **-10°C** and **+120°C**  
 Ambient temperature up to **+50°C**  
 Max. working pressure **16 bar**  
 Continuous service **S1**



**TECHNICAL DATAS**

Model	178	186	188	192	380	385	480	485	490N	490	495	
Type	Single-cylinder,4-stroke,air-cooled				Direct Injection, Water-cooling, Four Stroke							
Intake Type	Naturally Aspirated											
Bore*Stroke(mm*mm)	78*62	86*72	88*75	92*75	80*90	85*90	80*90	85*100	90*100	90*105	95*105	
Cylinder No.	1	1	1	1	3	3	4	4	4	4	4	
Displacement (L)	0.296	0.418	0.456	0.499	1.357	1.532	1.8	2.27	2.54	2.67	2.977	
Rated Power/Speed(kW/r/min)	3.7/3000 4.0/3600	5.7/3000 6.3/3600	6.6/3000 7.2/3600	7.5/3000 8.2/3600	20/3000	24/3000	28/3000	36/3000	42/3000	45/3000	50/3000	
Horse Power	5.0/3000 5.5/3600	7.8/3000 8.6/3600	9.0/3000 10.0/3600	10.2/3000 12.0/3600	27	32	38	49	58	61	68	
Power Coverage(kW)	≤11	≤11	≤11	≤11	≤37	≤37	≤37	≤55	≤55	≤55	≤75	

Model	498	4102	4105	4108	485Z	490NZ	490Z	498Z	4102Z	4105Z	4108Z	
Type	Direct Injection, Water-cooling, Four Stroke											
Intake Type	Naturally Aspirated				Turbo-charging							
Bore*Stroke(mm*mm)	98*105	102*118	105*118	108*118	85*100	90*100	90*105	98*105	102*118	105*118	108*118	
Cylinder No.	4	4	4	4	4	4	4	4	4	4	4	
Displacement (L)	3.168	3.857	4.087	4.324	2.27	2.54	2.67	3.168	3.857	4.087	4.324	
Rated Power/Speed(kW/r/min)	54/3000	62/3000	67/3000	73/3000	44/3000	50/3000	55/3000	60/3000	73/3000	75/3000	83/3000	
Horse Power	73	85	91	99	60	68	75	81	99	102	113	
Power Coverage(kW)	≤75	≤100	≤100	≤100	≤55	≤55	≤55	≤75	≤100	≤100	≤100	

## PV Vertical Multistage Jockey Pump PVT Jockey Pump with Pressure Tank


**TECHNICAL DESCRIPTION**

- ※New vertical multistage centrifugal pump
- ※Original design by PURITY
- ※Both square motor & round motor available
- ※YE3 high efficient motor, with protection IP55 class F
- ※Pump case with anti-corrosive coating
- ※Impeller in techno-polimer
- ※Shaft in stainless steel AISI 304 or galvanized iron
- ※Suction and discharge port in cast iron G20 thread
- ※Quality NSK bearing, wear resistance mechanical seal

**APPLICATIONS**

Suitable for use with clean water and liquids that are not chemically aggressive towards the materials from which the pump is made. The high efficiency and adaptability of these pumps to even the most unusual of applications, makes them ideal for use in the domestic, civil and industrial sectors; in particular for the distribution of water in combination with pressure sets and for pressure boosting.

**USING LIMITS**

Liquid temperature between **-10°C** and **+120°C**  
 Ambient temperature up to **+50°C**  
 Max. working pressure **25 bar**  
 Continuous service **S1**

**TECHNICAL DATA**

MODEL	Flow	Head	Power	Jockey	Tank
	GPM	Bar	hp		L
PVT25/3	25	6	3	PV 6×11/3	60
PVT35/4	35	7	4	PV 8×12/4	60
PVT50/5.5	50	7	5.5	PV 12×12/5.5	60
PVT75/7.5	75	7	7.5	PV 12×17/7.5	60
PVT100/10	100	8	10	PV 30×7/10	100
PVT125/12	125	8	12	PV 30×9/12	100
PVT150/15	150	8	15	PV 30×11/15	100

**50HZ**

MODEL	Flow	Head	Power	Jockey	Tank
	GPM	Bar	hp		L
PVT25/3	25	7	3	PV 6×7/3	60
PVT35/4	35	7	4	PV 8×8/4	60
PVT50/5.5	50	8	5.5	PV 12×7/5.5	60
PVT75/7.5	75	8	7.5	PV 12×9/7.5	60
PVT100/10	100	8	10	PV 30×5/10	100
PVT125/12	125	8	12	PV 30×6/12	100
PVT150/15	150	9	15	PV 30×8/15	100

**60HZ**

**TECHNICAL DATA**
**50 Hz n=2900 1/min**

MODEL	Power		us gpm l/min m³/h	Q=DELIVERY																	DN mm			
	kw	hp		0	5	11	13	16	19	21	24	26	29	32	37	42	48	53	58	63		69	74	79
				0	20	40	50	60	70	80	90	100	110	120	140	160	180	200	220	240		260	280	300
PV 4x7/1.5	1.1	1.5	60.7	56.8	52.1	49	45.9	42.8	38.9	35	30.3	25.7	20.2										25x25	
PV 4x9/2	1.5	2	78	73	67	63	59	55	50	45	39	33	26										25x25	
PV 4x13/3	2.2	3	113	105	96.8	91	85.2	79.4	72.2	65	56.3	47.7	37.5										25x25	
PV 4x16/4	3	4	139	130	119	112	105	97.8	88.9	80	69.3	58.7	46.2										25x25	
PV 6x5/1.5	1.1	1.5	44.4				135.5	33.3	30.9	28.4	26.1	23.4	20.2	14.3	6.8								32x32	
PV 6x8/2	1.5	2	71.1				56.7	53.2	49.5	45.5	41.8	37.5	32.4	22.9	10.9								32x32	
PV 6x11/3	2.2	3	97.7				78	73.2	68	62.5	57.5	51.5	44.5	31.5	15								32x32	
PV 6x15/4	3	4	133				106	99.8	92.7	85.2	78.4	70.2	60.7	43	20.5								32x32	
PV 8x4/1.5	1.1	1.5	36.8						30	28.4	27.2	26	24.4	21.2	17.6	13.2	9.2	4.8					40x40	
PV 8x7/2	1.5	2	64.4						52.5	49.7	47.6	45.5	42.7	37.1	30.8	23.1	16.1	8.4					40x40	
PV 8x9/3	2.2	3	82.8						67.5	63.9	61.2	58.5	54.9	47.7	39.6	29.7	20.7	10.8					40x40	
PV 8x12/4	3	4	110						90	85.2	81.6	78	73.2	63.6	52.8	39.6	27.6	14.4					40x40	
PV 8x16/5.5	4	5.5	147						120	114	109	104	97.6	84.8	70.4	52.8	36.8	19.2					40x40	
PV 12x3/1.5	1.1	1.5	31							25.4	24.7	24	22.4	20.6	18.4	16.2	13.3	10.9	8.3	5.1	2		50x50	
PV 12x5/2	1.5	2	51.7							42.4	41.2	40	37.3	34.3	30.7	27	22.2	18.2	13.8	8.5	3.3		50x50	
PV 12x7/3	2.2	3	72.3							59.3	57.6	56	52.3	48.1	43	37.8	31	25.5	19.4	11.9	4.7		50x50	
PV 12x9/4	3	4	93							76.2	74.1	72	67.2	61.8	55.2	48.6	39.9	32.8	24.9	15.4	6		50x50	
PV 12x12/5.5	4	5.5	122							102	98.8	96	89.6	82.4	73.6	64.8	53.2	43.8	33.2	20.5	8		50x50	
PV 12x17/7.5	5.5	7.5	176							144	140	136	127	117	104	91.8	75.4	62	47	29	11.3		50x50	

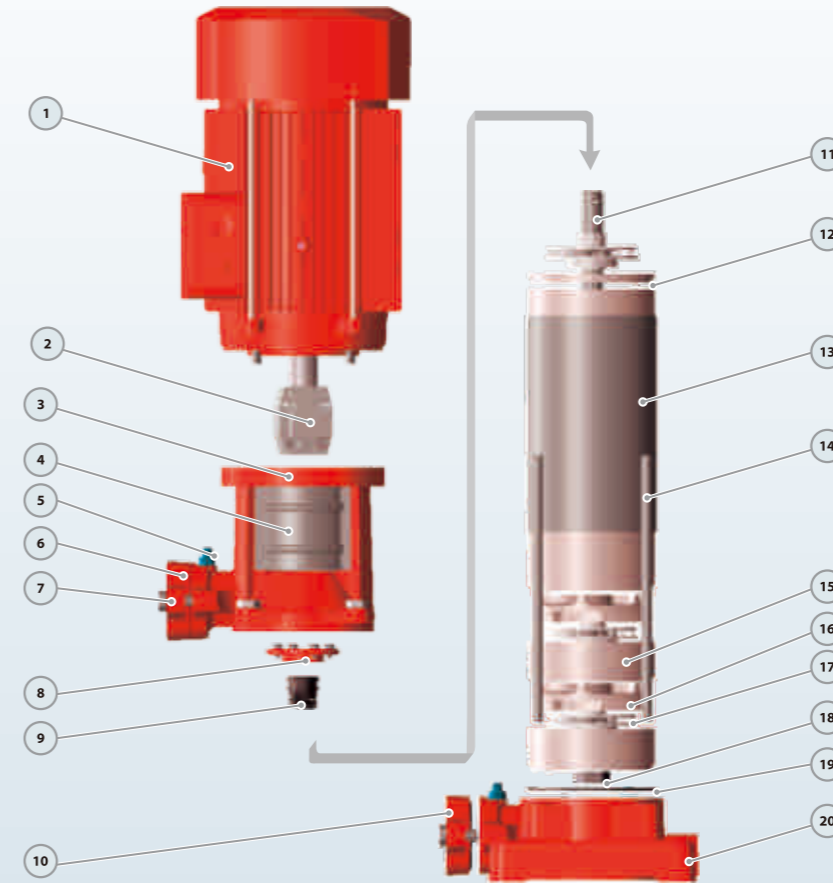
MODEL	Power		us gpm l/min m³/h	Q=DELIVERY								DN mm	
	kw	hp		0	26	53	79	106	132	159	185		211
				0	100	200	300	400	500	600	700		800
PV 30x7/10	7.5	10	104	100	93	83	74	64	49	31	4	50x50	
PV 30x9/12	9.2	12.5	133	128	119	108	96	82	63	40	5	65x65	
PV 30x11/15	11	15	163	156	145	132	116	99	77	48	6	65x65	

**60 Hz n=3450 1/min**

MODEL	Power		us gpm l/min m³/h	Q=DELIVERY																	DN mm			
	kw	hp		0	5	11	13	16	19	21	24	26	29	32	37	42	48	53	58	63		69	74	79
				0	20	40	50	60	70	80	90	100	110	120	140	160	180	200	220	240		260	280	300
PV 4x4/1.5	1.1	1.5	52	49	46	44	41	39	37	33	30	27	23										25x25	
PV 4x6/2	1.5	2	77	74	69	66	63	58	55	50	45	40	34										25x25	
PV 4x8/3	2.2	3	104	99	92	88	84	78	73	66	60	53	45										25x25	
PV 4x10/4	3	4	129	124	116	110	104	97	91	83	75	66	57										25x25	
PV 4x13/5.5	4	5.5	168	161	150	143	136	126	119	108	97	86	74										32x32	
PV 4x16/7.5	5.5	7.5	206	198	185	177	167	156	146	133	119	106	91										32x32	
PV 6x3/1.5	1.1	1.5	40				36	35	33	31	30	28	26	22	17								40x40	
PV 6x5/2	1.5	2	66				60	58	55	52	50	47	43	36	28								40x40	
PV 6x7/3	2.2	3	92				85	81	78	73	70	66	61	51	40								40x40	
PV 6x9/4	3	4	119				109	104	100	94	90	84	78	65	51								40x40	
PV 6x12/5.5	4	5.5	159				145	139	133	125	120	113	104	87	68								40x40	
PV 6x16/7.5	5.5	7.5	197				180	173	165	156	150	140	130	108	85								50x50	
PV 8x4/2	1.5	2	53						44	42	41	39	37	33	29	23	17	12					40x40	
PV 8x6/3	2.2	3	79						66	64	61	59	56	50	44	35	26	18					40x40	
PV 8x8/4	3	4	105						88	85	82	78	74	66	58	46	34	24					40x40	
PV 8x10/5.5	4	5.5	132						110	106	102	98	93	83	73	58	43	30					40x40	
PV 8x13/7.5	5.5	7.5	171						143	138	133	127	121	108	95	75	56	39					40x40	
PV 8x17/10	7.5	10	224						187	180	173	167	158	141	124	99	73	51					40x40	
PV 12x3/2	1.5	2	44							43	42	41	40	38	36	33	30	27	24	20	17		50x50	
PV 12x4/3	2.2	3	59							58	57	55	53	50	48	44	40	36	32	27	23		50x50	
PV 12x5/4	3	4	73							72	71	69	66	63	60	55	50	45	40	34	29		50x50	
PV 12x7/5.5	4	5.5	102							101	99	97	92	88	84	77	70	63	56	48	40		50x50	
PV 12x9/7.5	5.5	7.5	132							130	127	124	119	113	108	99	90	81	71	61	51		50x50	
PV 12x11/10	7.5	10	161							159	155	152	145	138	131	121	110	99	87	75	63		50x50	
PV 12x15/15	11	15	220							217	212	207	198	189	179	165	150	136	119	102	86		50x50	

**60 Hz n=3450 1/min**

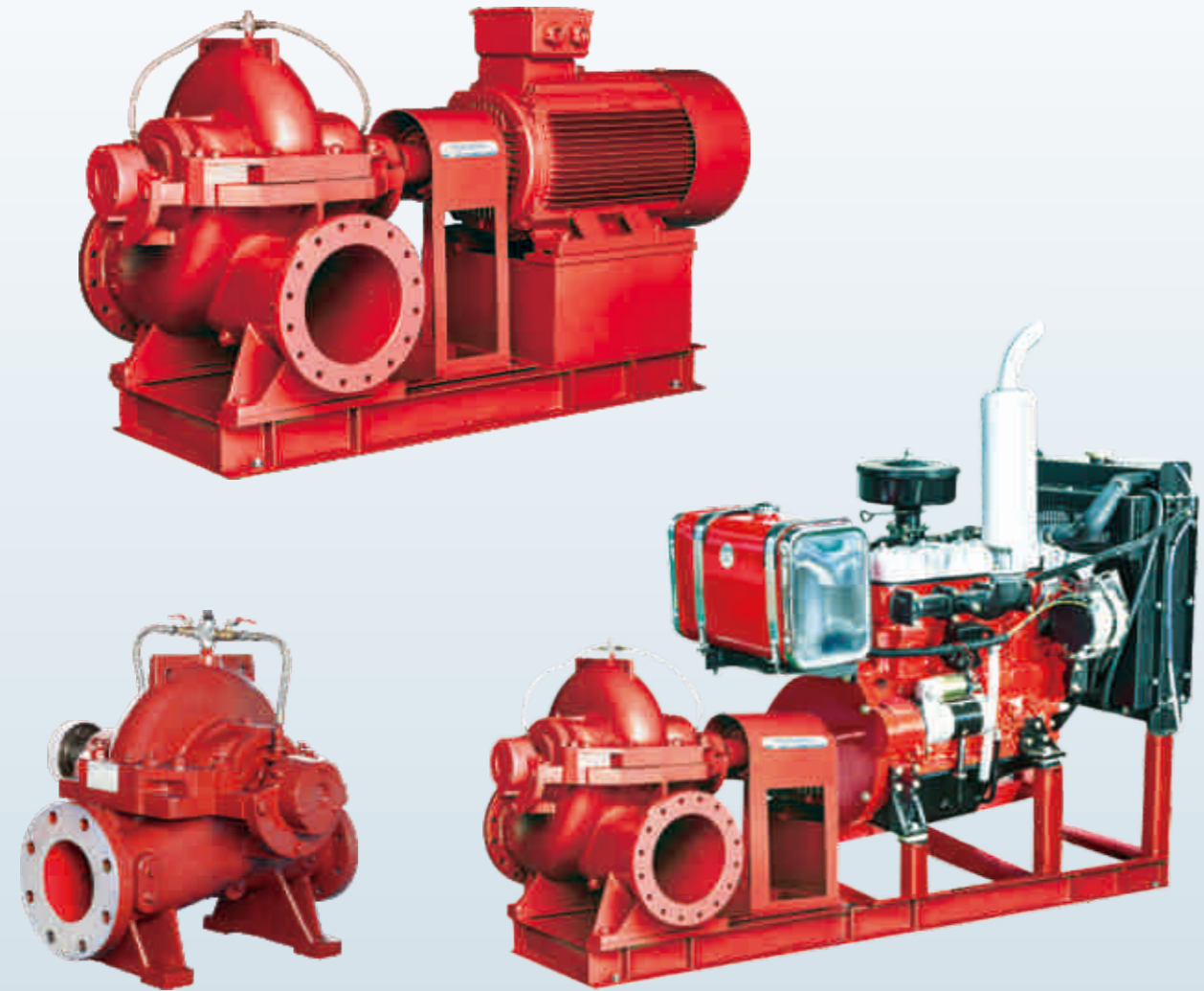
MODEL	Power		us gpm l/min m³/h	Q=DELIVERY										DN mm
	kw	hp		0	26	53	79	106	132	159	185	211		
				0	100	200	300	400	500	600	700	800		
PV 30x5/10	7.5	10	105	100	93	86	78	67	54	36	4	50x50		
PV 30x6/12	9.2	12.5	126	120	112	103	94	80	65	44	5	65x65		
PV 30x8/15	11	15	168	158	149	138	124	106	86	58	6	80x80		

**MATERIAL DESCRIPTION**


No.	Description Descripción	Material Material
1	Motor	IP55 Class F
2	Coupling	Iron
3	Discharge Body	Cast iron
4	Cover	SS304
5	Release Valve	Brass
6	Discharge	Cast iron
7	Bolt	Steel
8	Seal Cover	Cast iron
9	Mechanical Seal	SiC/Carbon/SS304
10	Suction	Cast iron
11	Pump Shaft	SS304/4# Iron
12	Diffuser Top Cover	Technopolimer
13	Pump Cover	SS304
14	Through Bolt	Steel
15	Diffuser Cover	Technopolimer with SS304 ring
16	Diffuser	Technopolimer with SS304 ring
17	Impeller	Technopolimer
18	Impeller Nut	Galvanized Steel
19	O-ring	Rubber
20	Suction Body	Cast iron



# PSC Double Suction Split Case Pump



### TECHNICAL DESCRIPTION

- ※ New split case pump
- ※ Original design by PURITY (patented)
- ※ Available complete with electric motor or diesel engine
- ※ Easily back pull-out from driver
- ※ Pump case with anti-corrosive coating HT250
- ※ Impeller in stainless steel AISI 304 or HT250
- ※ Shaft in stainless steel AISI 304 or galvanized iron
- ※ Quality bearing, mechanical seal/gland packing

### APPLICATIONS

Suitable for use with clean water and liquids that are not chemically aggressive towards the materials from which the pump is made. The split case pumps are recommended for use in water supply, cleaning sets, pressure boosting, firefighting sets, irrigation, industrial applications, water circulation in climatization sets, agricultural.

### USING LIMITS

Liquid temperature between **-10°C** and **+120°C**  
 Ambient temperature up to **+50°C**  
 Max. working pressure **25 bar**  
 Continuous service **S1**

### TECHNICAL DATA

PSC 50 Hz n=2900 1/min  
 60 Hz n=3500 1/min

MODEL	Flow Range m³/h	Head Range m	Power Range kw	DN mm
80-210A1	131-164-197	60.5-55-50	26.8-29.9-33.4	125x80
80-210A2	121-151-181	52-47.5-42.2	21.6-24.1-26.1	125x80
80-210A3	115-144-173	44-39-35	17.8-19-21.1	125x80
80-210A4	110-137-164	37-33.5-27.7	14.7-16-16.7	125x80
80-210B1	107-134-160	55.5-51-46	20.5-22.9-25.1	125x80
80-210B2	106-133-159	47.7-43.5-37	17.6-19.3-20	125x80
80-210B3	100-124-149	40-36-30	14.4-15.6-16.5	125x80
80-210B4	91-113-136	35-31-27	12.1-12.9-13.9	125x80
80-270A1	166-207-248	97.5-90-79	57-64.6-70.8	125x80
80-270A2	156-194-233	83.5-77-69	46.6-52.6-58.1	125x80
80-270A3	147-184-220	70-63.5-55	37.5-41.8-44.6	125x80
80-270A4	138-173-198	56.5-50-45	28.7-31.4-32.8	125x80
80-270B1	137-171-205	91-82.5-72.5	44.6-49.9-54.1	125x80
80-270B2	122-153-184	79.5-71.5-67	35.6-39.1-44.7	125x80
80-270B3	115-144-173	66.8-60-53	28.5-31.3-33.7	125x80
80-270B4	110-137-164	54.5-49-42	22.4-24.5-25.9	125x80
80-370A1	180-226-272	168-155.2-134	118.4-129.6-138.4	125x80
80-370A2	160-198-240	140-132-116.4	84.8-96.8-106.4	125x80
80-370A3	140-176-212	117.2-110-98.8	65.6-75.2-81.6	125x80
80-370A4	130-142-196	95.2-90-80	51.2-59.2-64	125x80
80-370B1	160-198-240	155.2-142-125.2	94.4-104.8-114.4	125x80
80-370B2	144-180-216	136.4-123.2-105.2	77.6-86.4-91.2	125x80
80-370B3	120-152-180	110-102-90	56-64-68	125x80
80-370B4	106-134-160	85.2-80-70	39.2-45.6-48	125x80
100-250A1	230-288-346	83-75-67	64.2-70.9-78.4	150x100
100-250A2	219-274-328	69-63-55	51.9-58.3-62.3	150x100
100-250A3	209-261-313	59-52-46.5	43.5-46.8-51.5	150x100
100-250A4	193-240-290	49-45-37	33.9-37.7-39.2	150x100
100-250B1	196-245-294	75-68-59	50-55.6-59.8	150x100
100-250B2	180-223-268	65-59-51	40.6-44.7-47.9	150x100
100-250B3	165-205-246	56-51-44	32.9-36.8-38.8	150x100
100-250B4	150-190-227	48-43-38	26.4-29.1-31.1	150x100
100-310A1	294-367-440	135-123-105	137.7-153.8-164	150x100
100-310A2	268-335-402	116-106-92	108-121.4-131	150x100
100-310A3	242-302-363	98-90-80	82.7-93.5-102.5	150x100
100-310A4	182-227-333	72-74-66.5	52.8-70.7-78.1	150x100
100-310B1	226-283-340	130-119-105	105-117.4-128.5	150x100
100-310B2	208-260-310	111-103-90	81.8-93.7-100	150x100
100-310B3	200-250-300	92-84-74	65.8-72.8-80.5	150x100
100-310B4	187-234-281	78-69-60	53.1-57.1-61.2	150x100
100-375A1	266-334-400	189.2-184-152	196-226.4-233.6	150x100
100-375A2	248-310-372	164-152-124	162.4-180.8-184.8	150x100
100-375A3	216-270-324	130-121.2-101.2	115.2-116-134.4	150x100
100-375B1	228-284-340	190-176-156	177.6-189.6-218.4	150x100
100-375B2	210-260-314	160-150-130	141.6-150.4-173.6	150x100
100-375B3	184-230-276	123.2-114.8-100	101.6-114.4-123.2	150x100

PSC 50 Hz n=2900 1/min  
 60 Hz n=3500 1/min

MODEL	Flow Range m³/h	Head Range m	Power Range kw	DN mm
125-230A1	426-541-639	68-60-48	93.8-101.8-101.9	200x125
125-230A2	392-490-585	60-52-43.5	78.1-82.1-84.4	200x125
125-230A3	363-454-544	50-43.5-35	63.4-65.1-66.6	200x125
125-230A4	340-425-489	40-34-30	49.4-50.8-52.5	200x125
125-230B1	377-472-566	68-60.5-55	84.2-92-101.5	200x125
125-230B2	349-436-523	60-53-44	70.3-74.8-77.2	200x125
125-230B3	328-410-493	52-45-37	60.1-61.3-63.3	200x125
125-230B4	305-382-458	42.5-37-30	47.1-49.9-49.9	200x125
125-290A1	428-535-642	117-108-95	166-187-202	200x125
125-290A2	397-497-596	97-88-75	131-145-153	200x125
125-290A3	363-454-544	80-72-62	101-111-117	200x125
125-290A4	323-403-484	65-57-47	74.7-80.2-80.5	200x125
125-290B1	383-480-575	113-100-85.5	145-157-166	200x125
125-290B2	348-436-523	93.5-83.5-70	112-121-126	200x125
125-290B3	308-385-462	78-70-60	84.5-93-96.9	200x125
125-290B4	274-342-410	60-55-47	59.6-67.4-70	200x125
125-365A1	490-620-720	200-188-176	329.6-377.6-418.4	200x125
125-365A2	450-562-674	166.4-156-142.4	254.4-288-323.2	200x125
125-365A3	410-512-614	134.8-126-112.8	193.6-214.4-238.4	200x125
125-365A4	368-460-556	102-96-83.6	135.2-150.4-161.6	200x125
125-365B1	444-554-666	185.2-172-155.2	283.2-320.8-352	200x125
125-365B2	404-504-604	159.2-148-131.2	224-254.4-273.6	200x125
125-365B3	364-454-544	130.4-122-110	171.2-196-214.4	200x125
125-365B4	316-396-476	105.2-98-87.2	119.2-139.2-150.4	200x125
150-290A1	708-886-1062	96-84-70	216.8-232.8-242.4	200x150
150-290A2	646-806-968	84-72-60	177.6-184-192	200x150
150-290A3	604-756-908	70-60-49.2	144-147.2-152.8	200x150
150-290A4	560-700-792	54.8-46-40	111.2-113.6-113.6	200x150
150-290B1	634-792-950	93.6-81.6-66.4	192-204.8-205.6	200x150
150-290B2	604-756-908	80-68-54.8	159.2-164.8-165.6	200x150
150-290B3	564-706-846	70-58-45.2	132.8-132.8-132	200x150
150-290B4	530-662-756	56-46-39.2	104-104-106.4	200x150
150-360A1	714-892-1072	165.2-152-136.8	387.2-434.4-483.2	200x150
150-360A2	646-806-968	136.8-124-105.2	295.2-328-343.2	200x150
150-360A3	596-740-890	114.8-100-84	235.2-249.6-258.4	200x150
150-360A4	530-662-796	93.6-80-66.8	176.8-184.8-186.4	200x150
150-360B1	650-814-976	156.8-140-120	338.4-369.6-394.4	200x150
150-360B2	588-734-880	132-118-100	262.4-288-300	200x150
150-360B3	534-668-800	110-100-85.2	203.2-228-238.4	200x150
150-360B4	466-584-700	91.2-82-70	153.6-167.2-176	200x150
150-460A1	692-864-1032	190-174-148	456-512-557.6	200x150
150-460A2	634-792-950	152-140-112.8	340.8-384.8-405.6	200x150
150-460B1	600-750-900	177.6-160-138	372-408-456.8	200x150
150-460B2	520-648-780	142-132-113.6	268-298.4-325.6	200x150





**PSC4 50 Hz n=1450 1/min**  
**60 Hz n=1750 1/min**

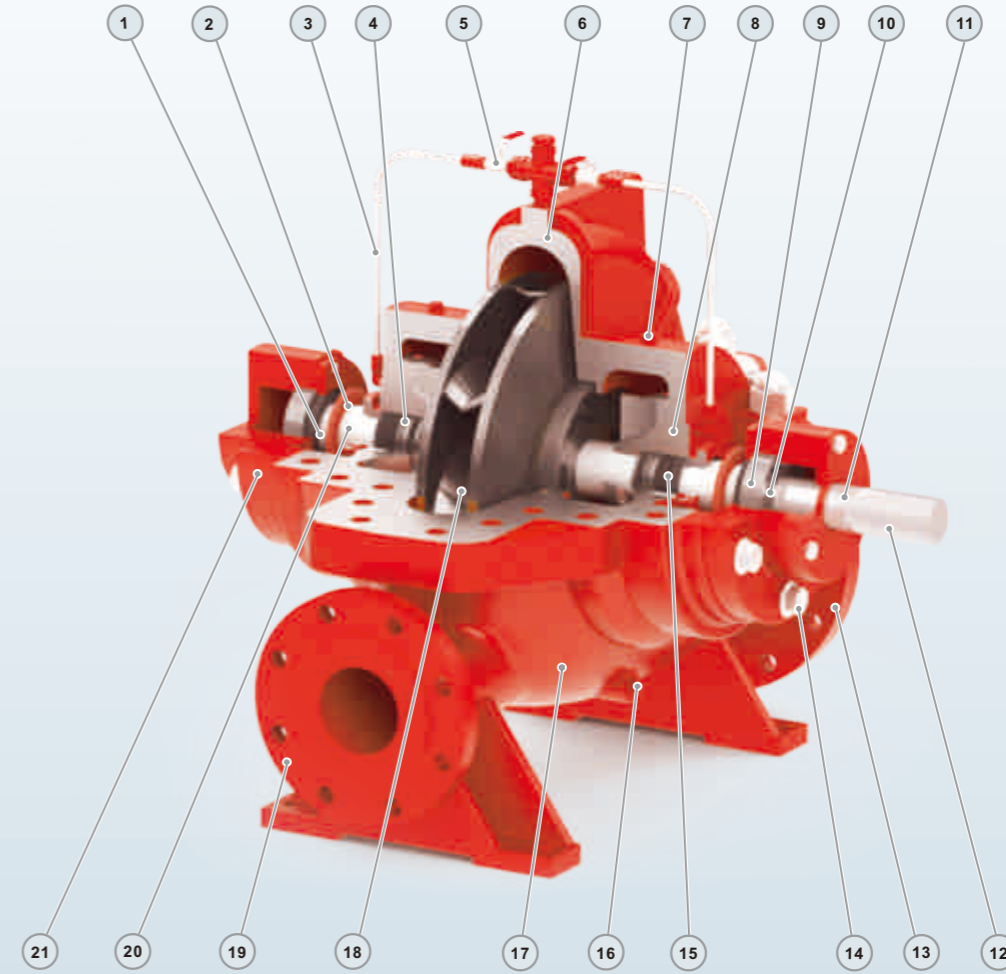
**TECHNICAL DATA**

MODEL	Flow Range m³/h	Head Range m	Power Range kw	DN mm
250-710A1	904-1130-1356	184-175-164	579-674-775	300x250
250-710A2	782-978-1174	161-152-141	444-513-578	300x250
250-710A3	738-922-1106	136-128-118	358-415-465	300x250
250-710A4	692-865-1038	113-106-99	280-325-360	300x250
300-300A1	878-1098-1318	28.8-24.5-20	83.8-85.2-89.4	350x300
300-300A2	835-1044-1253	23.5-19.8-15	66.4-66.6-63.2	350x300
300-300A3	806-1008-1210	19-15.5-11.4	52.8-51.9-48.2	350x300
300-300A4	772-965-1158	15-11.5-7.5	41.5-37.8-32	350x300
300-300B1	745-936-1123	26.2-23-20	64.4-69-72.9	350x300
300-300B2	691-864-1037	24-20-15.8	56.2-56-55.1	350x300
300-300B3	639-800-960	20-16.7-13.5	45.5-44.9-44.6	350x300
300-300B4	560-700-840	17.5-15-12	37.1-37.1-36.1	350x300
300-435A1	1342-1677-2012	60-53-46	257-275-295	400x300
300-435A2	1262-1577-1892	52-45-37.5	213-223-230	400x300
300-435A3	1181-1476-1771	42.5-36.5-28.5	171-175-172	400x300
300-435A4	1088-1360-1530	33.8-27.5-24	132-129-128	400x300
300-435B1	1396-1620-1944	57.5-51.5-43.5	240-260-273	400x300
300-435B2	1215-1519-1823	51.5-45-37.5	206-215-222	400x300
300-435B3	1138-1422-1706	43.5-37.5-30	168-173-174	400x300
300-435B4	1066-1332-1598	35-30.5-24.8	130-136-138	400x300
300-560A1	1397-1745-2095	101.5-94-83.5	454-520-570	400x300
300-560A2	1316-1645-1974	83.5-76-67	357-398-433	400x300
300-560A3	1258-1573-1888	68-63-54	281-313-339	400x300
300-560A4	1213-1516-1819	57-50-42	232-247-260	400x300
300-560B1	1238-1548-1858	88.5-80-70	359-399-427	400x300
300-560B2	1158-1447-1736	75-67-57	286-316-331	400x300
300-560B3	1089-1361-1633	64-57-50	235-255-273	400x300
300-560B4	1026-1282-1538	53-47.5-41	186-204-213	400x300
300-700A1	1469-1836-2070	170-160-151	810-941-1012	400x300
300-700A2	1388-1735-2082	147-136-125	662-760-854	400x300
300-700A3	1298-1623-1948	122-112-100	521-567-647	400x300
300-700A4	1230-1537-1845	100-91-80	408-454-500	400x300

**PSC4 50 Hz n=1450 1/min**  
**60 Hz n=1750 1/min**

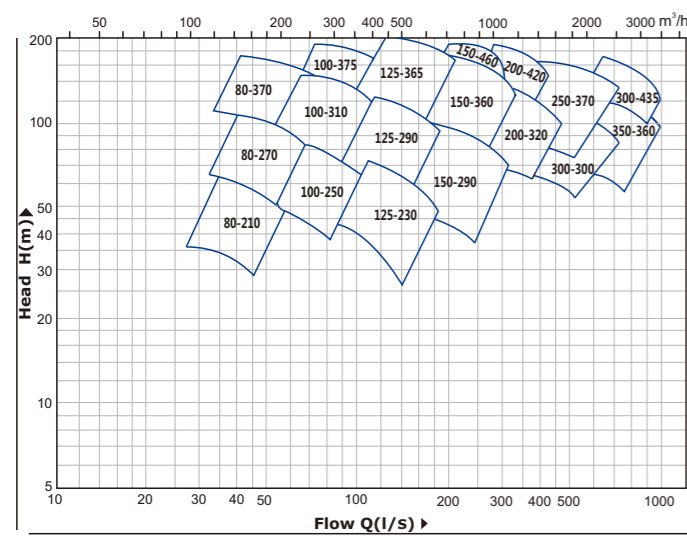
MODEL	Flow Range m³/h	Head Range m	Power Range kw	DN mm
300-700B1	1350-1688-2026	152-139-124	679-765-840	400x300
300-700B2	1258-1573-1888	130-119-105	544-614-667	400x300
300-700B3	1160-1450-1740	108-99-87	422-474-512	400x300
300-700B4	1074-1342-1610	90-81-71.5	328-361-391	400x300
350-360A1	1385-1731-2077	37.5-32-25	171-175-175	400x350
350-360A2	1354-1692-2030	32-26.5-20	146-144-138	400x350
350-360A3	1313-1641-1969	26.5-21-15	120-113-103	400x350
350-360A4	1282-1602-1922	20-15-9	91-81-64	400x350
350-360B1	1138-1422-1706	35.5-31-25.8	133-140-144	400x350
350-360B2	1068-1335-1602	30.5-26.3-21.3	110-114-115	400x350
350-360B3	1016-1270-1524	25.6-22.5-17.5	90-95-93	400x350
350-360B4	950-1188-1397	21.5-17.8-13.7	74-74-71	400x350
350-430A1	2194-2743-3292	49.5-43.5-35	353-371-371	450x350
350-430A2	2108-2635-3162	41.5-35-27	291-294-281	450x350
350-430A3	2050-2563-3076	33-27.5-20	231-229-210	450x350
350-430A4	1987-2484-2981	27-21.5-15	187-180-160	450x350
350-430B1	1786-2232-2678	48-42.5-35	277-299-303	450x350
350-430B2	1670-2088-2506	42.5-36-28.8	237-242-240	450x350
350-430B3	1590-1987-2384	35-30-23.5	193-198-195	450x350
350-430B4	1486-1858-2230	30-25-18.5	160-161-148	450x350
350-510A1	2088-2610-3132	80-70-60	529-562-605	400x350
350-510A2	1944-2430-2916	68-60-50	426-456-473	400x350
350-510A3	1786-2232-2678	57.5-50-40	345-353-360	400x350
350-510A4	1656-2070-2484	45-38-30	267-271-264	400x350
350-510B1	1958-2448-2938	76-67-57	466-508-531	400x350
350-510B2	1814-2268-2722	67.5-59.5-50	393-422-436	400x350
350-510B3	1670-2088-2506	58-50-41.5	320-335-344	400x350
350-510B4	1555-1944-2333	47.5-41.5-34.5	258-265-274	400x350
350-590A1	3036-3795-4500	100-90-78	956-1046-1139	500x350
350-590A2	2834-3543-4162	88-77.2-66	800-857-891	500x350
350-590A3	2604-3255-3906	74-64.3-53	648-663-688	500x350
350-590A4	2556-3020-3623	56-48.9-40.6	497-509-517	500x350

**MATERIAL DESCRIPTION**

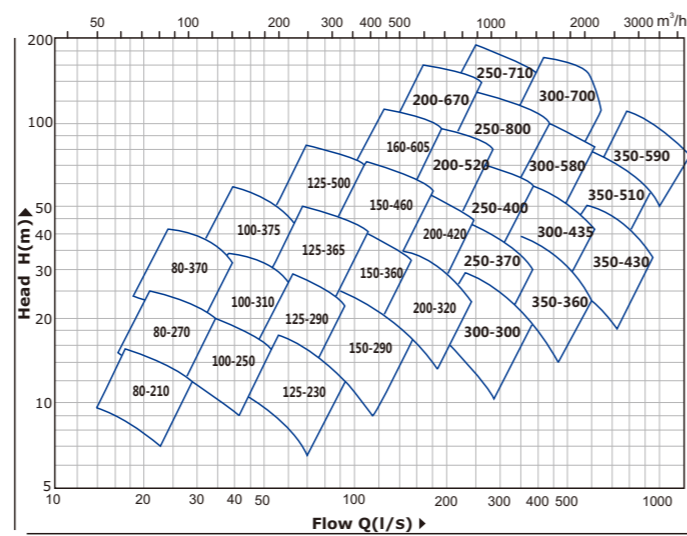


**PERFORMANCE CHART**

**PSC n=2900 1/min**



**PSC4 n=1450 1/min**



No.	Description	Material	No.	Description	Material	No.	Description	Material
1	Block ring	Rubber	8	Seal house	Cast iron	15	Gland seal(Mechanical Seal)	Synthepak(SiC-Carbon)
2	O-ring	Rubber	9	Bearing	Ball Bearing	16	Release Valve	Brass
3	Flushing pipe	SS304	10	Lock washer	Steel	17	Pump Case	Cast iron
4	Packing ring	Carbon	11	Shaft	SS304/45# Steel	18	Impeller	SS304/Cast iron
5	Valve	Brass	12	Shaft Key	Iron	19	Output flange	Cast iron
6	Pump cover	Cast iron	13	Input flange	Cast iron	20	Shaft sleeve	SS304
7	Vent plug	Brass	14	Bolt	Steel	21	Bearing house	Cast iron

## Fire Pump System Accessories



suction and discharge line



Battery



Brass Gate Valve



Brass Check Valve



Gate Valve



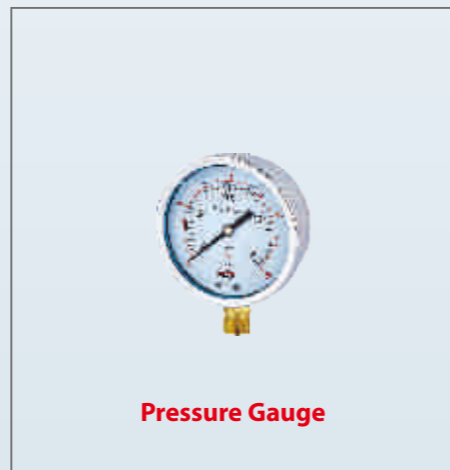
Check Valve



Flexible Joint



Pressure Switch



Pressure Gauge

Fire Pump Control Panel is the Pump System brain that designed to Control & Monitor the operation of the Electric, Diesel, and Jockey Pumps Drivers, and makes up pumps for both Manual & Automatic modes, as well as turns pumps drivers ON/OFF under specific conditions.

The Fire Pump Package Controller detects signals through set of built in switches that reflect the system Pressure & Flow status enabling fire pump package drivers (Electrical /Diesel /Jockey) to operate in case of pressure in the system is lower than set point, as well as operating the Stand by driver due to power failure and/or substantial drop in pressure.

Fire Pumps Series Controllers are pre-wired, tested before delivery and made ready for immediate usage.

## Control Panel



### TECHNICAL DATA

Item No.	Main Pipe Diameter (mm)	Main Pipe Length (cm)	Branch Pipe Diameter (mm)	Flange	Gate Valve (mm)	Check Valve (mm)	Flexible Joint (mm)	Brass Gate Valve (mm)	Brass Check Valve (mm)	Controller (mm)	Battery (AH)	Underframe (m)	Pressure Gauge Switch(bar)
PEDJ50/6-5.5-5.5-2	50	90	25	DN50	32 Brass	32 Brass	32	25	25	400x500x200	60	1x0.9	16
PEDJ100/7-10-8.6-3	80	90	25	DN80	50	50	50-32	25	25	400x500x200	60	1x0.9	16
PEDJ120/7-10-10-3	80	90	25	DN80	65	65	65-40	25	25	400x500x200	60	1x0.9	16
PEDJ150/7-15-10-3	80	90	25	DN80	65	65	65-40	25	25	400x500x200	60	1x0.9	16
PEDJ200/7-20-27-3	100	94	32	DN100	65	65	65-50	32	32	500x600x200	100	1x1.3	16
PEDJ250/7-25-27-4	100	94	32	DN100	65	65	65-50	32	32	500x600x200	100	1x1.3	16
PEDJ300/7-30-32-4	100	94	32	DN100	65	65	65-50	32	32	500x600x200	100	1x1.3	16
PEDJ350/7-30-32-4	100	94	32	DN100	65	65	65-50	32	32	500x600x200	100	1x1.3	16
PEDJ400/7-40-38-5.5	100	120	50	DN100	80	80	80-65	50	50	600x800x200	120	1.2x1.45	16
PEDJ500/8-50-58-5.5	150	120	50	DN150	80	80	80-65	50	50	600x800x200	150	1.2x1.45	16
PEDJ750/8-75-75-7.5	150	130	50	DN150	100	100	100-80	50	50	600x800x200	150	1.3x1.55	16
PEDJ1000/8-100-99-10	150	1420	50	DN150	100	100	100-100	50	50	600*800*200	150	1.5x1.6	16

### FLANGE DATA

Flange Item No.	DN Inch	Outer Dia. (mm)	Bolt Pitch (mm)	Bolt DN (mm)	Bolt No.	Thickness (mm)
DN10	0.375	90	60	14	4	14
DN15	0.5	95	65	14	4	14
DN20	0.75	105	75	14	4	16
DN25	1	115	85	14	4	16
DN32	1.25	140	100	18	4	18
DN40	1.5	150	110	18	4	18
DN50	2	165	125	18	4	20
DN65	2.5	185	145	18	4	20
DN80	3	200	160	18	8	20
DN100	3.5	220	180	18	8	22
DN125	4	250	210	18	8	22
DN150	5	285	240	22	8	24
DN200	6	340	295	22	8	26
DN250	8	405	355	26	12	29
DN300	10	460	410	26	12	32
DN350	12	520	470	26	16	35
DN400	14	580	525	30	16	38
DN450	16	640	585	30	20	42
DN500	18	715	650	33	20	46
DN600	20	840	770	36	20	52



## Pressure Tank



V-5L-24L

V-36L-100L



H-19L-100L

### SPECIFICATION

- ※ For water system
- ※ Fixed and changable rubber membrane
- ※ Carbon steel body
- ※ Natrual rubber membrane/EPDM membrane
- ※ Working temperature: Natrual rubber: 0°C-77°C  
EPDM: -10°C-99°C

### TECHNICAL DATA

Model	Max. pressure(bar)	Precharge Pressure(bar)	Diameter(mm)	Height(mm)	Connector	Pcaking CBM
V-5L	8	1.5	170	281	G3/4"	0.0108
V-8L	8	1.5	200	333	G3/4"	0.0157
V-12L	8	1.5	268	320	G3/4",1"	0.0266
V-36L	8	1.5	350	520	G3/4",1"	0.077
V-50L	8	1.5	350	650	G3/4",1"	0.08
V-60L	8	1.5	350	670	G3/4",1"	0.082
V-80L	8	1.5	400	765	G3/4",1"	0.1224
V-100L	8	1.5	450	810	G3/4",1"	0.16
H-19L	8	1.5	268	410	G3/4",1"	0.0367
H-24L	8	1.5	268	430	G3/4",1"	0.038
H-36L	8	1.5	350	520	G3/4",1"	0.073
H-50L	8	1.5	350	540	G3/4",1"	0.075
H-60L	8	1.5	350	560	G3/4",1"	0.78
H-80L	8	1.5	400	640	G3/4",1"	0.1119
H-100L	8	1.5	450	680	G3/4",1"	0.1457

Other sizes from 100L to 500L are also available

## Fire Alarm Valve System



ZSFZ-M

ZSFZ-S

### WET ALARM VALVE

ZSFZ system is a kind of universal automatic fire extinguishing system and it is the key component of automatic sprinkler system. It is mainly composed of seat ring, rubber-faced clapper and water flow alarm check valves. It's intended for use in wet pipe fire protection system (Automatic sprinkler system). It can be installed vertically or horizontally. It is designed to automatically actuate electric and hydraulic alarms when there is a steady flow of water into the system that is equivalent to the discharge rate of one or more sprinklers.

### ADVANTAGES

- Widely use in office, school, kitchen and warehouse
- It can be installed vertically or horizontally
- Stable work performance
- High efficiency on fire extinguishing
- Easy installation and use
- Work by temperature sensitivity
- Various types to choose
- OEM available

### Characteristics and Functions

Model	ZSFZ
Type	Wet water fire alarm valve
Material	Brass, Cast Iron
Norminal diameter	DN100, DN125, DN150, DN200.
Norminal working pressure	12bar~16bar
Strength test pressure	4.8Mpa
Flux(l/min)	15s
Structure	Safety wet fire water alarm valve
Power	Hydraulic wet fire water alarm valve
Pressure	High Pressure wet fire water alarm valve

### TECHNICAL DATA

Mode	Norminal Diameter (mm)	Norminal Working Pressure (Mpa)	Body Height (mm)	Flange Outer Diameter (mm)	Symmetric Hole Diameter (mm)	Screw Hole No. & Diameter (mm)	Water Pressure Reduced	Drive Time (s)
ZSFZ100	DN100	1.2~1.6	250	220	180	8x18	<-0.07	<-15
ZSFZ125	DN125	1.2~1.6	255	250	210	8x18	<-0.07	<-15
ZSFZ150	DN150	1.2~1.6	270	285	240	8x22	<-0.07	<-15
ZSFZ200	DN200	1.2~1.6	370	340	295	12x22	<-0.07	<-15

## Fire Alarm Valve System



ZSFC-M



ZSFC-S

### DRY ALARM VALVE

ZSFC dry alarm valve, which is applicable in low temperature environment, is the control valve of dry type sprinkler system. The pipes are charged with gas that generates certain pressure to not only monitor and test the leak proof but also make the valve keep close. When sprinklers open and the pressure in the pipes reduces to a designed degree, the valve opens, then water runs into the piping system and sprays from the sprinklers to extinguish the fire.

### TECHNICAL DATA

Mode	Normal Diameter (mm)	Normal Working Pressure (Mpa)	Body Height (mm)	Flange Outer Diameter (mm)	Symmetric Hole Diameter (mm)	Screw Hole No. & Diameter (mm)	Water Pressure Reduced	Drive Time (s)
ZSFC100	DN100	1.2~1.6	250	220	180	8x18	<0.07	<15
ZSFC150	DN150	1.2~1.6	270	285	240	8x22	<0.07	<15
ZSFC200	DN200	1.2~1.6	370	340	295	12x22	<0.07	<15

## Fire Alarm Valve System



ZSFM-M



ZSFM-S



ZSFG-S

### DELUGE ALARM VALVE

ZSFM deluge alarm valve is a quick release, hydraulically operated diaphragm valve. It is known as a system control valve in a deluge system, used for fast application of water in a spray system.

Deluge Systems deliver large quantities of water, over a large area, in a relatively short period of time. They are commonly used in fixed fire protection systems whose pipe system is empty until the deluge valve distributes pressurised water from open nozzles or sprinklers.

It has three chambers, isolated from each other by the diaphragm operated clapper and seat seal. It contains more components and equipment than wet pipe and dry systems. So far that matter they are more complex. Deluge valve protects areas such as power transformer installation, storage tank, conveyor protection and other industrial application etc.

### TECHNICAL DATA

Mode	Normal Diameter (mm)	Normal Working Pressure (Mpa)	Body Height (mm)	Flange Outer Diameter (mm)	Symmetric Hole Diameter (mm)	Screw Hole No. & Diameter (mm)	Water Pressure Reduced	Drive Time (s)
ZSFG100	DN100	1.6	330	220	180	8x18	<0.07	<15
ZSFG150	DN150	1.6	350	285	240	8x22	<0.07	<15
ZSFG200	DN200	1.6	430	340	295	12x22	<0.07	<15

Mode	Normal Diameter (mm)	Normal Working Pressure (Mpa)	Sealing Test Pressure (Mpa)	Flange Outer Diameter (mm)	Symmetric Hole Diameter (mm)	Screw Hole No. & Diameter (mm)	Water Pressure Reduced	Drive Time (s)
ZSFM50	DN50	1.2	2.4	165	125	4x8	<0.07	<15
ZSFM65	DN65	1.2	2.4	185	145	4x18	<0.07	<15
ZSFM80	DN80	1.2	2.4	200	160	8x18	<0.07	<15
ZSFM100	DN100	1.2	2.4	220	180	8x18	<0.07	<15
ZSFM125	DN125	1.2	2.4	220	180	8x18	<0.07	<15
ZSFM150	DN150	1.2	2.4	285	240	8x22	<0.07	<15
ZSFM200	DN200	1.2	2.4	340	295	12x22	<0.07	<15
ZSFM250	DN250	1.2	2.4	405	355	12x26	<0.07	<15
ZSFM300	DN300	1.2	2.4	460	410	12x26	<0.07	<15



## Fire Alarm Valve System



ZSFY-S1

ZSFY-M

ZSFY-S2

### PREACTION ALARM VALVE

ZSFY type preaction alarm valve is an integration of fire detection alarm technology and automatic sprinkler system, which can function for dual protection for the target. As the side pipe is filled with gas when there is no fire risk, the system shows the features of dry type system and can meet the requirements of fire extinguishing fire in high temperature and freezing conditions.

### TECHNICAL DATA

Mode	Normal Diameter (mm)	Normal Working Pressure (Mpa)	Flange Outer Diameter (mm)	Symmetric Hole Diameter (mm)	Screw Hole No. & Diameter (mm)	Water Pressure Reduced	Drive Time (s)
ZSFY100	DN100	1.2	220	180	8x18	<0.07	<15
ZSFY150	DN150	1.2	285	240	8x22	<0.07	<15
ZSFY200	DN200	1.2	340	295	12x22	<0.07	<15

## Water Flow Indicator



Flow Indicator(saddle)

Flow Indicator(saddle)m1

Flow Indicator(insert)

Flow Indicator(flange)

Flow Indicator(flange)m2

Flow Indicator(thread)

Water flow indicator of ZSJZ series, which is used in the automatic sprinkler system and installed in the main or branch flow pipe, functions for sending out the electrical signals for water flow in certain area. The signals can not only reach electrical controlling box but also start the control switch of fire pump. The flow indicator have both ZSJZ(A) delayed circuit and ZSJZ(B) non-delayed circuit, of which there are seven kinds of specifications respectively, namely, 50, 65,80,100,125,150,200 to meet the requirement of different pipes. The delayed circuit type usually delays 4s and delay length can be specifically adjusted.

### TECHNICAL SPECIFICATIONS

installtion method	Flang Type	Saddle Type	ThreadType
type	ZSJZ50-ZSJZ200		ZSJZ50-ZSJZ150
nominal diameter(mm)	DN50 DN65 DN80 DN100	DN125 DN150 DN200	DN50-DN150
rated w.p.(Mpa)	1.2		
delay time(S)	2-90		
response sensitivity (L/min)	15<Q<37.5		
seitch volume	AC220/3A,DC24v/1A		

## Sprinkler

### Fire Fighting Water Sprinkler with ISO, CCC Certificates

1. Widely use in office, school, kitchen and warehouse;
2. Work by temperature sensitive;
3. Various types to choose;
4. Easy to install and use.



### TECHNICAL DATA

#### Characteristics and Functions

Model	T-ZSTZ
Material	Brass, chrome plating
Type	Upright type of fire fighting water sprinkler head
Norminal diameter(mm)	15DN or 20DN
Connecting thread	R1/2 or R3/4
Glass bulb color	Red
Temperature rating	68°C
Flow Rate	80±4 or 115±6
Bulb	3mm or 5mm
Response	Standard or quick response

#### Basic Parameters of Fire Sprinkler

Type	Model	Norminal Diameter	Thread	Flow Rate	Style
Ordinary	T-ZSTP	DN15	R1/2	80±4	Upright/Pendent
		DN20	R3/4	115±6	
Pendant	T-ZSTX	DN15	R1/2	80±4	Pendent
		DN20	R3/4	115±6	
Upright	T-ZSTZ	DN15	R1/2	80±4	Upright
		DN20	R3/4	115±6	
Sidewall	T-ZSTBS	DN15	R1/2	80±4	Horizontal Sidewall
		DN20	R3/4	115±6	
Concealed	ZSTDY	DN15	R1/2	80±4	Pendent
		DN20	R3/4	115±6	

Nozzle Rated Temp	Max Ambient Temp	Glass Ball Color
57°C	27°C	Orange
68°C	38°C	Red
79°C	49°C	Yellow
93°C	63°C	Green
141°C	111°C	Blue
182°C	152°C	Purple

## Outdoor Fire Hydrant



P-FH-001(BS750)

P-FH-002

P-FH-003

P-FH-004

P-FH-005



P-FH-006

P-FH-007

Outdoor fire hydrants are water supply facilities that installed on the outdoor fire protection water supply pipe network or municipal water supply pipe network. It is one of the important firefighting facilities for fighting fires.

#### Its main functions are:

- 1) For the fire truck to take water from the municipal water supply network or the outdoor water supply network.
  - 2) The hose can be connected directly to the hydrant to extinguish the fire.
- The BS750 outdoor fire hydrant belongs to the above ground type and wet fire hydrant. It adopts 4-inch flange connection for water inlet and the nominal pressure is 1.6MPa. It mainly consists of two 2.5-inch outlet valves and hydrant body. The body is exposed on the ground, and the outlet valve can directly connect the fire hose.

#### Description

Landing Fire Hydrant

- 1) Size: DN80, DN100.
- 2) Work pressure: PN16.
- 3) Material: ductile iron, cast iron
- 4) Color: blue color, black color, red color, gray color, etc.



## Indoor Fire Hydrant



Indoor Fire Hydrant as a fixed fire fighting equipment in factories, warehouses, high buildings and ships, is a connector installed in the water piping network in the buildings, used to offer assistance to extinguish and control the fire

### TECHNICAL DATA

Mode	Ordinary Type		Pressure Reducing and Steadying	Revolving	Pressure Reducing and Steadying,Revolving	Double Valve Double Outlet	Double Valve Double Outlet Pressure Reducing&Steadying
Type	SN		SNW	SNZ	SNZW	SNSS	SNSSW
Nominal Dia. (mm)	DN50	DN65	DN65	DN65	DN65	DN65	DN65
Nominal W.P.	1.6						
Strength T.P.	2.4						
Applicable Medium	Clean water, form adventure squid						

SNW, SNZW, SNSSW Indoor Fire Hydrant Pressure Reducing & Steadying Capability and Flux efficiency

Inlet Pressure P1(MPa)	ReAOutlet Pressure P2(MPa)volving	Flux Q(L/S)
0.4 ~ 0.8	0.25 ~ 0.35	>5.0

## Fire Blanket

Item No: PXHT-106

Thickness: 0.43mm、0.6mm、0.8mm or customized

Size: 1mx1m, 1.2mx1m, 1.2mx1.2m, 1.5mx1m, 1.5mx1.2m, 1.5mx1.5m, 1.8mx1m, 1.8mx1.2m, 1.8mx1.5m, 1.8mx1.8m

Color: White or customized

Material: 100% Fiberglass cloth, Can be coated with silicone

Package: PVC soft pouch, or PVC hard box



## Fire Hose Cabinet



Fire Cabinet is suitable for fire extinguisher, fire hose, fire hose reel, fire hydrant, etc. It can be customized with or without accessories such as nozzle, bracket, waterway, axe, and hydrant. Size, material and color can be customized as well.

### COMMON SIZE

800x800x280, 700x700x250, 670x670x300, 800x700x250, 600x700x250, 750x750x310, 600x600x255 (OEM Size is Available)

## Fire Hose



Lining fire hose, which is used to carry water for fire fighting use or other extinguishing agent, consists of woven jacket and inner lining both of which are adhered closely. PVC lining fire hose shows the advantages of lightness, convenience, and low transportation cost, so it is an ideal product.

### FIRE HOSE NOMINAL W.P. AND B.P. REQUIREMENT:

Nominal Diameter(mm)	Working Pressure	Testing Pressure	Bursting Pressure	Length(m)
25				10
40				15
50				20
65				25
80	1.0MPa/10BAR/150PSI	1.5MPa/15BAR/220PSI	1.0MPa/10BAR/150PSI	30
90	1.3MPa/13BAR/195PSI	2.0MPa/20BAR/300PSI	1.3MPa/13BAR/195PSI	40
100	1.6MPa/16BAR/240PSI	2.4MPa/24BAR/360PSI	1.6MPa/16BAR/240PSI	
115	2.0MPa/20BAR/300PSI	3.0MPa/30BAR/450PSI	2.0MPa/20BAR/300PSI	
125				
140				
150				

## Fire Hose Reel



## Fire Hose Coupling



### MAIN TECHNICAL PARAMETER:

Model	Fire Hose Coupling		Storz Coupling		Fix Coupling	
Type	KD50	KD65	KY50	KY65	KN50	KN65
nominal Dia(mm)	DN50	DN65	DN50	DN65	DN50	DN65
nominal w.p(MPa)	1.6					
Strength T.P(Mpa)	2.4					
Application Medium	Clean water, foam admixture liquid					

